

# LUXURY SOFT 11.5

## CARPETIA ROYAL



LA DOUCEUR DE LA MATIÈRE COMBINÉE À UN RENDU DES COULEURS ENVELOPPANT ET PLEIN DE NUANCES. LE POIL DOUX DE CE TAPIS EXPRIME AU MIEUX LES COULEURS VIBRANTES DE LA COLLECTION CARPETIA ROYAL, CE QUI EN FAIT LE CHOIX IDÉAL POUR CEUX QUI RECHERCHENT UN STYLE AUDACIEUX AVEC DES DÉTAILS RICHES.

### DIMENSIONS



### TECHNICAL DETAILS

|                       |              |                               |
|-----------------------|--------------|-------------------------------|
| MANUFACTURING PROCESS | DIN ISO 2424 | TUFTED 1/10"                  |
| FRONTSIDE STRUCTURE   | DIN ISO 2424 | CUT PILE - SAXONY             |
| COLOR                 | DIN ISO 2424 | CHROMOJET PRINT               |
| PILE MATERIAL         |              | POLYAMID PA 6.6               |
| PRIMARY BACKING       | DIN ISO 2424 | PP WOVEN                      |
| SECONDARY BACKING     | DIN ISO 2424 | FELT BACK                     |
| PILE WEIGHT           | DIN ISO 2424 | Approx. 1400 g/m <sup>2</sup> |
| TOTAL WEIGHT          | ISO 8543     | Approx. 2715 g/m <sup>2</sup> |
| PILE HEIGHT           | ISO 1766     | Approx. 7,5 mm                |
| TOTAL THICKNESS       | ISO 1765     | Approx. 10,5 mm               |
| NUMBER OF KNOTS       | ISO 1763     | Approx. 178000/m <sup>2</sup> |
| WIDTH                 | DIN 3018     | Approx. 400 cm                |



FLAME RETARDANT C<sub>fl</sub>-s1



LUXURY CLASS LC5



LIGHTFASTNESS



SLIP RESISTANCE



CE MARKING



### FUNCTIONAL PROPERTIES

|                |                      |      |
|----------------|----------------------|------|
| COMFORT RATING | EN 1307:2014+A3:2018 | LC 5 |
|----------------|----------------------|------|

### PHYSICAL PROPERTIES

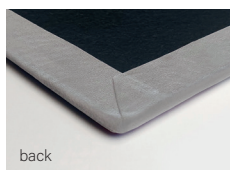
|             |                |           |
|-------------|----------------|-----------|
| FIRE RATING | DIN EN 13501-1 | Cfl-s1 *1 |
|-------------|----------------|-----------|

\*glued on massive mineral concrete

### FASTNESSES

|                            |                     |     |
|----------------------------|---------------------|-----|
| COLOUR FASTNESS TO LIGHT   | EN ISO 105-B02:2013 | 6-7 |
| COLOUR FASTNESS TO WATER   |                     | 5   |
| RUBBERING FASTNESS DRY/WET |                     | 5/5 |

### FOND EN FEUTRE - BORDURE ASSORTIE



### DELUXE

Bord en tissu velouté doux adapté pour les tapis rectangulaires.

### RIBBON

Bord en tissu doux d'épaisseur étroite, idéal pour les tapis ronds, également réalisable sur les tapis rectangulaires.

SELECTION POUR "CARPETIA ROYAL"



CIRCUM 01



LILIBET 01



CLOTILDA 01



GRACE 01



HOLLY-B 01



ULISSE 01



INTENSA 01



LUPE 01



CHERYL 01



PABLO 01



JARDIN 01



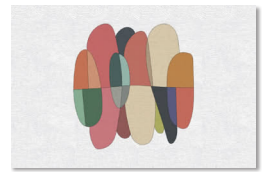
CARLITA 01



COLETTE 01



60'S 01



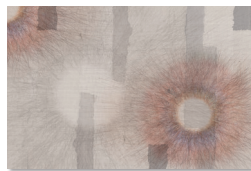
BOTERO 01



EGO 01



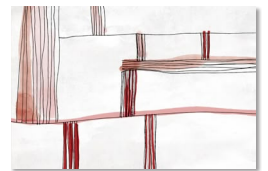
ABIGAIL 01



AVICE 01



BOTTLE 01



PLAN 01



ZAIRA 01



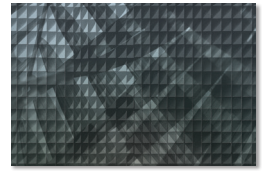
MATISSE 01



KARMA 01



EMILY 01



SOLEDAD 01



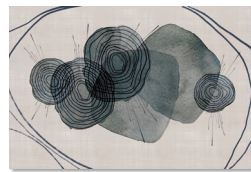
RENOIR 01



FRIDA 01



CHARLOTTE 01



GEORGE 01



BEE 01