

# MATERIA

## DECORATIVE WALLPAPER



Instabilelab with **MATERIA** offers a selection of 10 textures including 6 textured wood finishes and 4 materalic finishes from cement to marble. Ideal for covering walls and ceilings, staircases and niches, but also flush-to-wall, hinged and sliding doors.



CHARCOAL



LAVA OAK



ASH TREE



DARK WALNUT



OAK



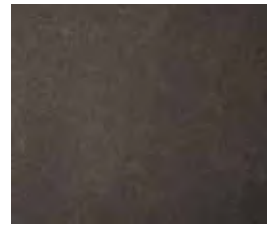
NORDIC OAK



LIGHT CEMENT



RUST MARBLE



ANTHRACITE



BLACK MARBLE

### CHARACTERISTICS

**DESCRIPTION:** TNT BASE + WATER-BASED RESINS

**WEIGHT:** 170 g/m<sup>2</sup>

**REACTION TO FIRE:** UNI EN 9177:2008 CLASS 2

**ROLL HEIGHT:** 125 cm

**THICKNESS:** 0,1 to 0,3 mm

**INTENDED USE:** RESIDENTIAL - COMMERCIAL - CONTRACT

#### WALLPAPER CLEANING

Use normal household cleaning products, preferably applied with a soft cloth. Strong, highly abrasive acids or bases should be avoided.

### CERTIFICATIONS



REACTION TO FIRE UNI EN 9177:2008 CLASS 2

FORMALDEHYDE EMISSION: EN ISO 12460-3:2020 = < 0,1

SCRATCH RESISTANCE: UNI EN 15186:2012, METB = D/C

DRY HEAT RESISTANCE: EN 12722:2013 = C/A

RESISTANCE TO MOIST HEAT: EN 12721:2013 = B/A

RESISTANCE TO COLD LIQUIDS: EN 12720:2013 = D/A

LIGHT RESISTANCE: UNI EN 15187 / 07 = 4/5

TENDENCY TO RETAIN DIRT:

UNI 9300:1988+A276:1989 = 3/4

VOLATILE ORGANIC COMPOUNDS - VOC:

UNI EN ISO 16000-9:2006 + ISO 16000-6:2011 = A+

### IMPORTANT INFO

Make sure that the wall is suitable for the installation and completely smooth. Any irregularities or graininess must be removed from the surface so that the wallpaper adheres perfectly to the wall.



A+ VOC EMISSION  
CERTIFIED



FSC-STD-40-004 V3.1

