

# AVENUE



**INSTABILELAB®**  
WALLCOVERING - TEXTILE - CARPETS



**INSTABILELAB®**

WALLCOVERING - TEXTILE - CARPETS

AVENUE



# AVENUE

Esiste una sola e unica strada giusta da seguire?

La vita ci pone continuamente di fronte a scelte che vanno in direzioni simili, diverse o addirittura opposte. Una strada presa porta con sé le considerazioni e le emozioni di quel momento e a distanza di tempo non sarà mai né totalmente giusta né totalmente sbagliata. Strade, sentieri, vie sono da guardare come possibilità per modificare la propria rotta, scegliendo in qualunque momento di intraprendere un percorso alternativo o di adottare un nuovo stile. Come cambiamo noi così possono cambiare anche le nostre strade.

'Avenue' rappresenta i nostri nuovi percorsi, visioni che si snodano in idee e stili creativi tutti da esplorare.

*Is there one and only one right path to follow?*

*Life constantly confronts us with choices that go in similar, different or even opposite directions. A road taken carries with it the considerations and emotions of that moment and at a distance will never be either totally right or totally wrong. Roads, paths, routes are to be looked at as possibilities to change one's course, choosing at any time to take an alternative path or adopt a new style. As we change so can our roads.*

*'Avenue' represents our new paths, visions that unfold in creative ideas and styles all to be explored.*

# index

GRAPHICS INDEX	07
ABOUT US	09
COLLECTIONS	
CHAPTER 1	13
CHAPTER 2	43
CHAPTER 3	73
CHAPTER 4	101
CHAPTER 5	129
CHAPTER 6	157
VARIANTS	
NUANCES	185
ARTISTIC	201
AUDACE	219
MONOCHROME	229



Le colorazioni dei prodotti riportati sul catalogo sono da ritenersi puramente indicative e non hanno valore di prova colore.  
La stessa grafica stampata su materiali diversi (parato, tappeti, tessuti) potrebbe presentare differenze di tonalità dovute alla diversa natura dei supporti.

*The colours printed in this catalogue have to be considered merely indicative and have no colour proof value.  
The same graphic printed on different materials (wallpaper, carpet, fabric) may show differences in colour tone due to the different materials.*



## graphics index

AIRA	22	186	ISIDE	166	211
AKAME	28	202	JACQUES	30	211
AKIRA	106	186	JAN	138	212
ALDESIRA	112	202	JOSI	74	212
ALIDA	115	187	KAEDE	152	192
ALIOSHA	58	220	KAZUO	68	223
AMOS	168	187	KIKI	123	223
ANGY	82	203	KOSTA	180	192
ARIEL	24	220	LEILA	137	193
ASTRID <i>monochrome</i>	154	230	LUCIEN	57	224
AUGUSTIN	160	203	MADARA	78	193
AUSILIA	118	204	MEI	124	224
AXEL	110	188	MIDORI	52	194
BARNABA <i>monochrome</i>	70	230	MILLAR	132	213
BASILIA	172	188	NICLA	158	225
BELMONT	60	204	NINA	44	194
BENNY	54	205	NOELIA	130	213
BETTA	32	221	NOEMI	35	214
BICE	76	205	NOSHIMA	84	225
BRENDA	16	206	OLIVIER	179	214
BRUNILDE	140	189	ONORIA	176	195
CASSANDRA	104	206	PALMIRA	109	215
CECILE	92	221	PASKALO	146	215
CERISA	65	207	PATROCLO	18	195
CHANTAL	102	189	PETRONILLA	88	196
CHRISTOS <i>monochrome</i>	98	231	RAFAEL <i>monochrome</i>	126	232
CLELIA	38	222	RENO	87	226
CLIZIA	174	207	RUBY	48	196
CONSUELO	81	190	SAMIR	120	226
DEAN	14	222	SANTE	46	216
DIOMIRA <i>monochrome</i>	40	231	SIGGY	116	197
DORIANE	90	190	TARA	144	197
DOROTHEA	51	208	TORVI	27	216
DYLAN	36	191	TURE	165	198
ETIENNE	148	208	VERENA	21	198
EVITA	95	209	WANDO <i>monochrome</i>	182	232
FLAVIANA	162	209	WENDY	171	227
FRANCINE	62	191	XAVIER	143	217
GISLENA	134	210	YORI	151	217
IANA	66	210	ZEFFIRO	96	227



## ABOUT US

Un'azienda veneziana dall'inesauribile creatività, Instabilelab propone la propria personale ed inedita interpretazione della carta da parati rimescolando idee e stili diversi, creando abbinamenti estetico-concettuali inediti, per dare reale valore e personalità agli spazi abitativi.

Innumerevoli sono i pattern e le atmosfere che l'azienda presenta anche grazie allo studio di texture e di nuove modalità di impiego e applicazione. Instabilelab, infatti, supera i limiti dell'utilizzo del parato, che progetta in un'ottica di continuum grafico realizzabile attraverso una serie di prodotti e tessuti dedicati a chi vuole realizzare un'atmosfera più che un ambiente.

Non solo creatività ma anche tecnologia: l'azienda ha il know how necessario per riprodurre le sue grafiche su diversi tipi di supporto e per coprire ogni aspetto del living indoor (pareti, soffitti, pavimenti, zone umide, elementi d'arredo, tessuti) e outdoor, grazie all'impiego di rivestimenti murali resistenti agli agenti atmosferici.

*A Venetian company of inexhaustible creativity, Instabilelab presents its own personal and original interpretation of wallpaper, mixing different ideas and styles, creating new aesthetic-conceptual combinations to give real value and personality to living spaces.*

*The company presents countless patterns and atmospheres, also thanks to the study of textures and new methods of use and application.*

*Instabilelab goes beyond the limits of the use of wallpaper, which it designs with a graphic continuum that can be achieved through a series of products and fabrics dedicated to those who want to create an atmosphere rather than an environment.*

*Not only creativity but also technology: the company has the necessary know-how to reproduce its graphics on different types of support and to cover every aspect of indoor living (walls, ceilings, floors, wet areas, furnishing elements, fabrics) and outdoor, thanks to the use of weather-resistant wallcovering.*

Nuances. Artistic. Audace. Monochrome.

'Avenue' è un viaggio attraverso tre approcci creativi, che rappresentano anche le tre anime di Instabilelab.

Un crescendo di sperimentazione che inizia con le forme calde e naturali di Nuances, attraversa l'approccio pittorico di Artistic e culmina con il coraggio stravagante delle grafiche di Audace.

A questi stili si aggiunge Monochrome, l'elegante proposta grafica che gioca tra toni e profondità.

*'Avenue' is a journey through three creative approaches that represent the three souls of Instabilelab.*

*A climax of experimentation that starts with the natural and warm shapes of Nuances, continues with the pictorial approach of Artistic and culminates with the extravagant bravery of Audace graphics.*

*Added to these styles is Monochrome, the elegant graphic proposal that plays with tone and depth.*



## CHAPTER 1













**VERENA 01**

*Nuances*

variants p. 198













**TORVI 01**  
*Artistic*

variants p. 216











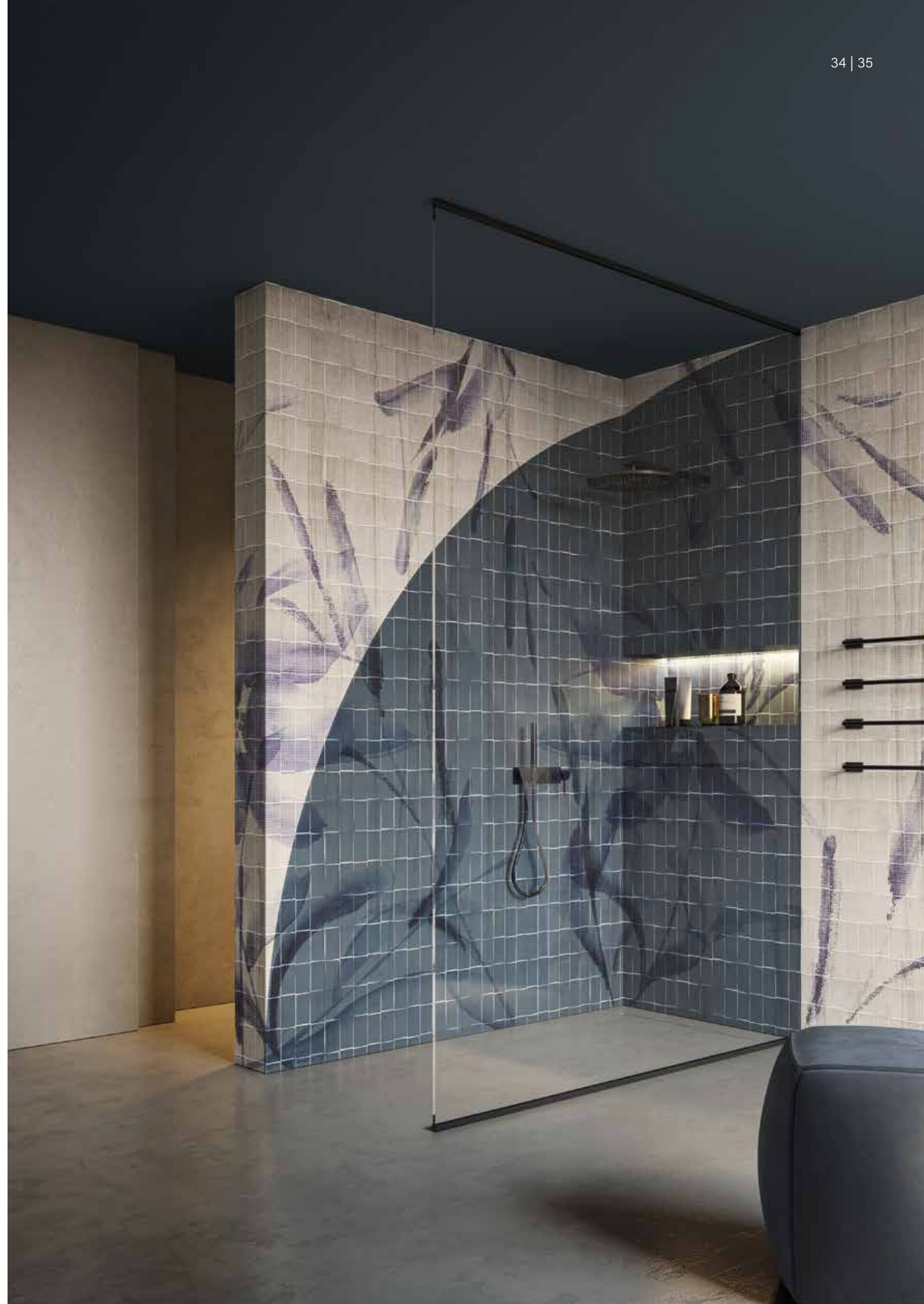






**NOEMI 01**  
*Artistic*

variants p. 214











DIOMIRA  
Monochrome

variants p. 231



01



02



03



04



05



06





## CHAPTER 2













**DOROTHEA 01**  
*Artistic*

variants p. 208













**LUCIEN 01**  
*Audace*

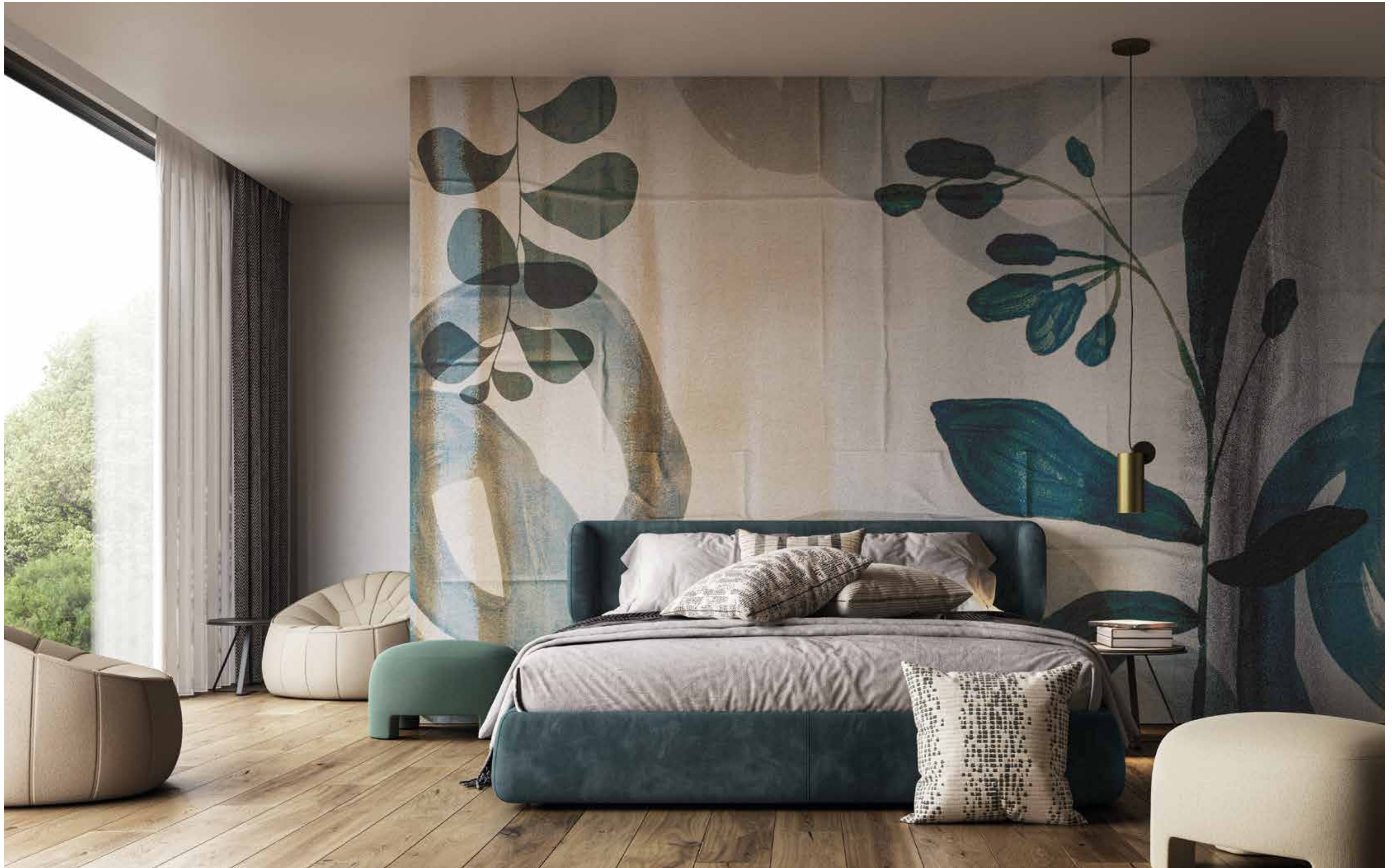
variants p. 224



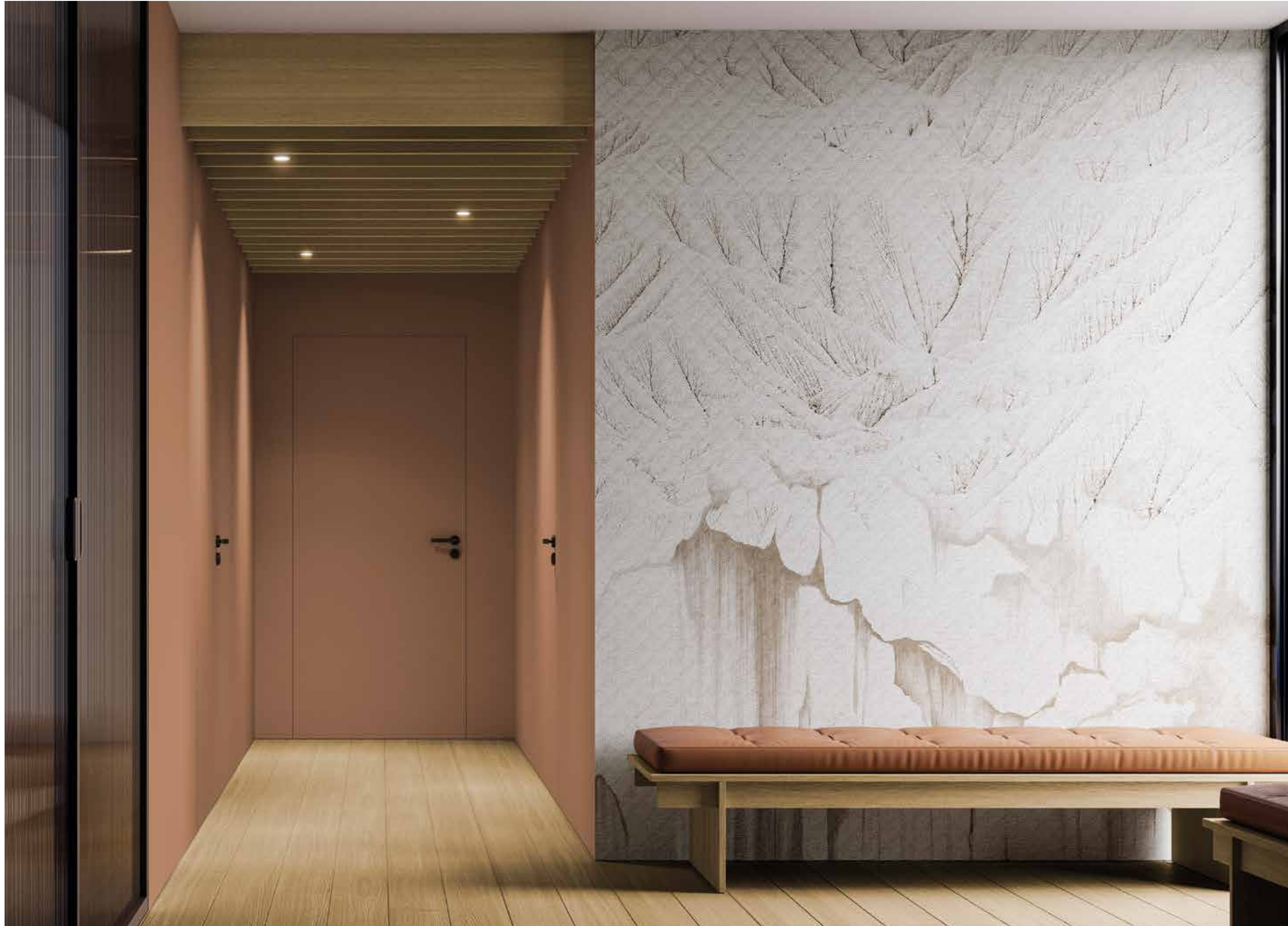














**CERISA 01**  
*Artistic*

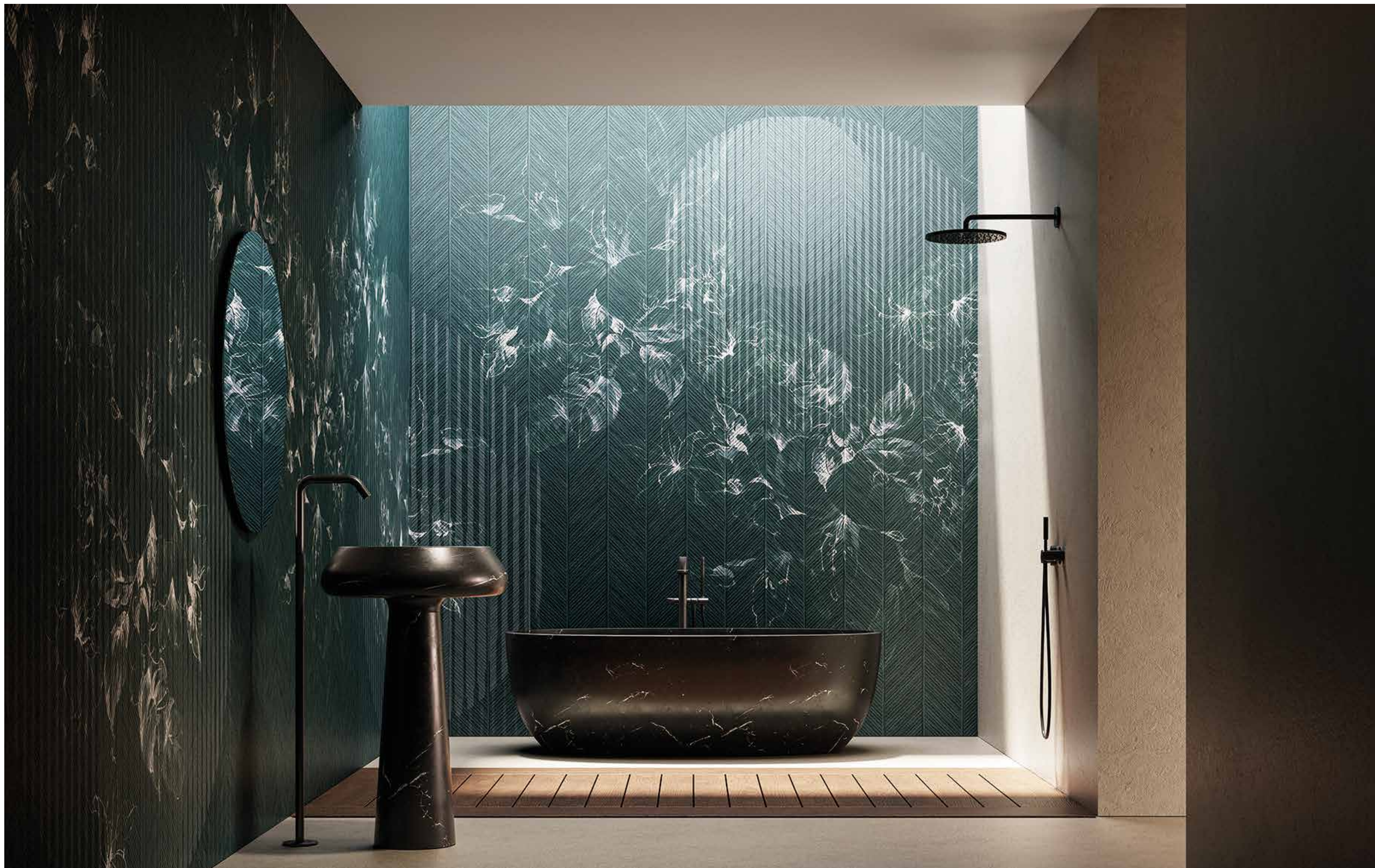
variants p. 207









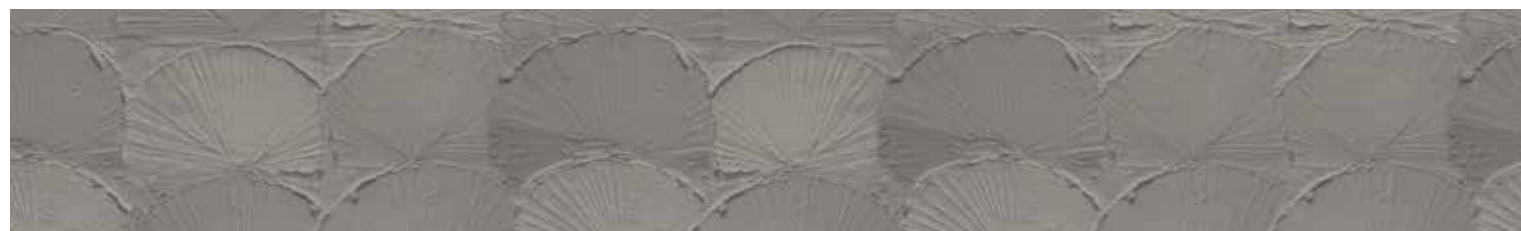




# BARNABA

Monochrome

variants p. 230



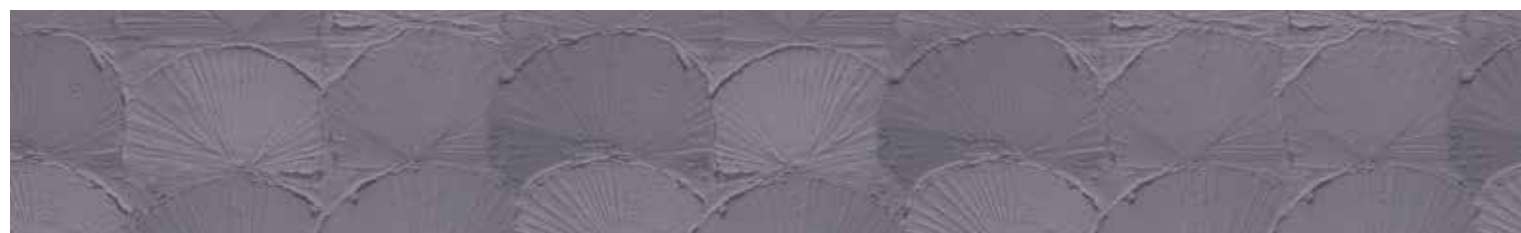
01



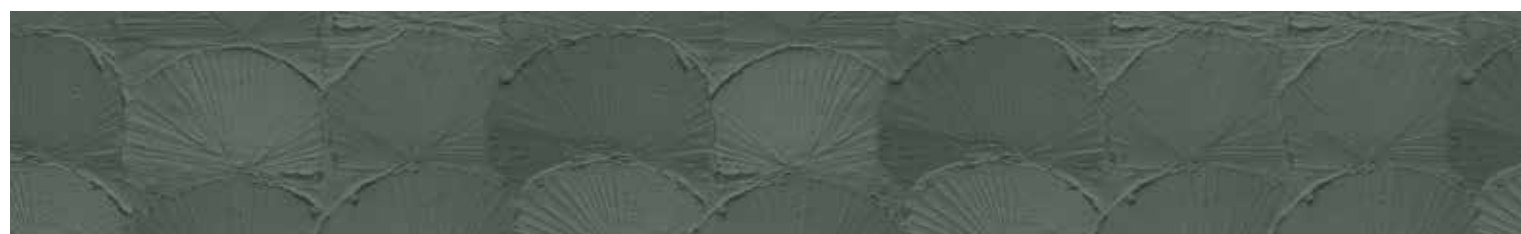
02



03



04



05



06







## CHAPTER 3















**CONSUELO 01**

*Nuances*

variants p. 190













**RENO 01**  
*Audace*

variants p. 226

















**EVITA 01**  
*Artistic*

variants p. 209









# CHRISTOS

Monochrome

variants p. 231



01



02



03



04



05



06







## CHAPTER 4















**PALMIRA 01**  
*Artistic*

variants p. 215













**ALIDA 01**  
*Nuances*

variants p. 187











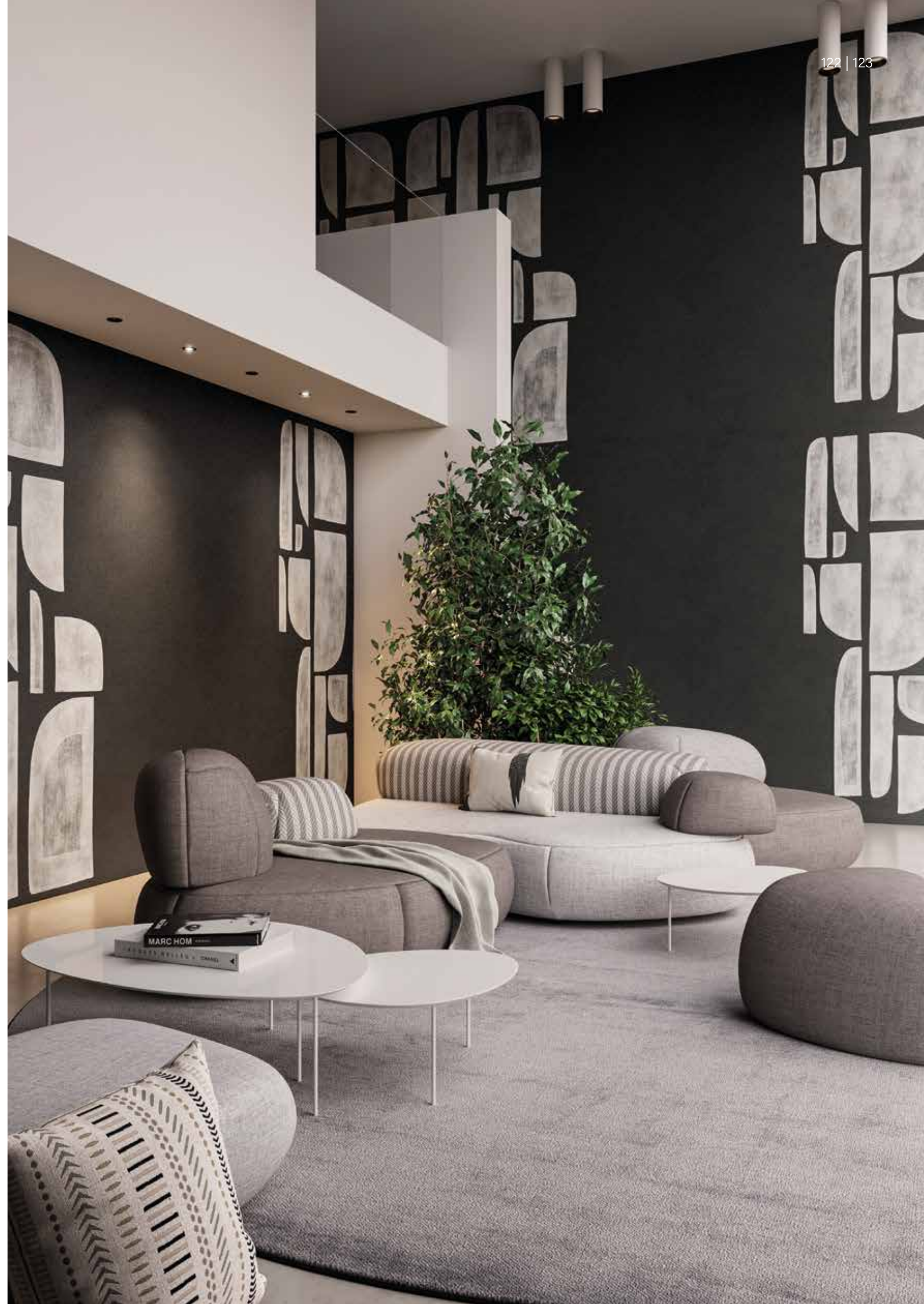




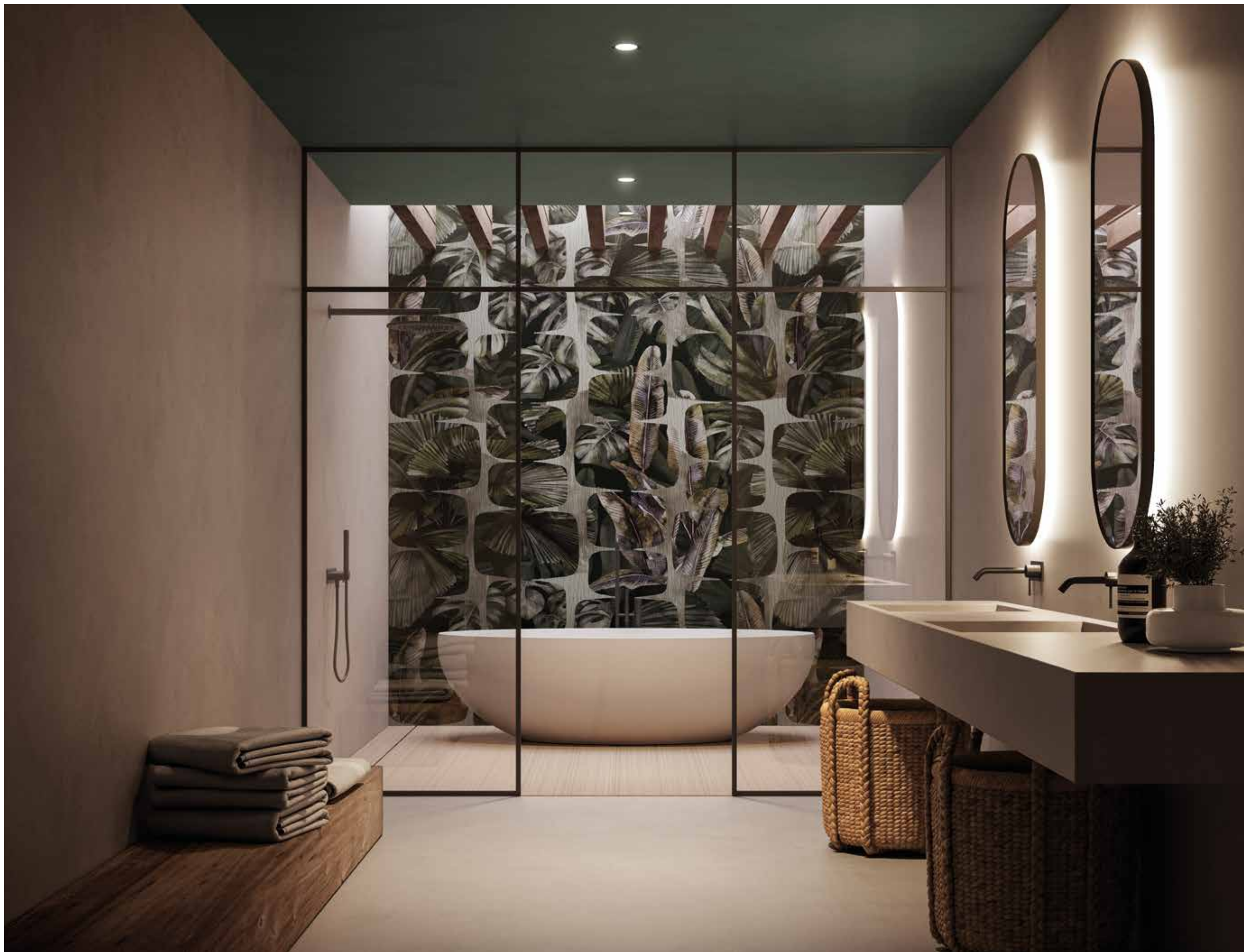


**KIKI 01**  
*Audace*

variants p. 223









**RAFAEL**

*Monochrome*

variants p. 232



01



02



03



04



05



06







## CHAPTER 5















**LEILA 01**  
*Nuances*

variants p. 193













**XAVIER 01**  
*Artistic*

variants p. 217

















**YORI 01**  
*Artistic*

variants p. 217





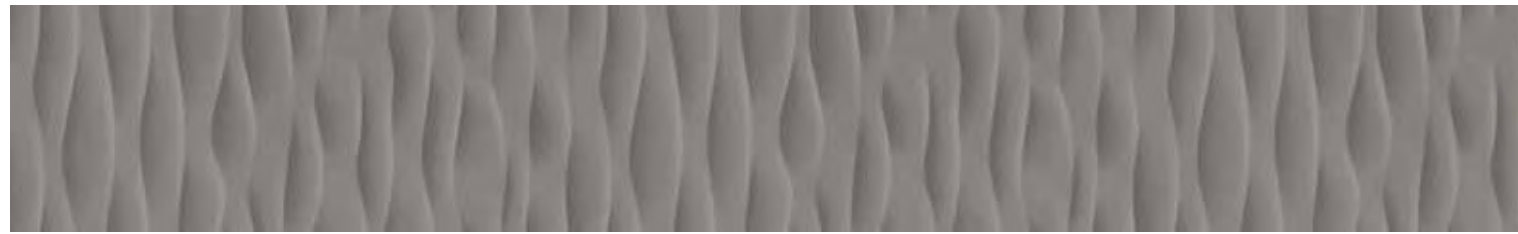




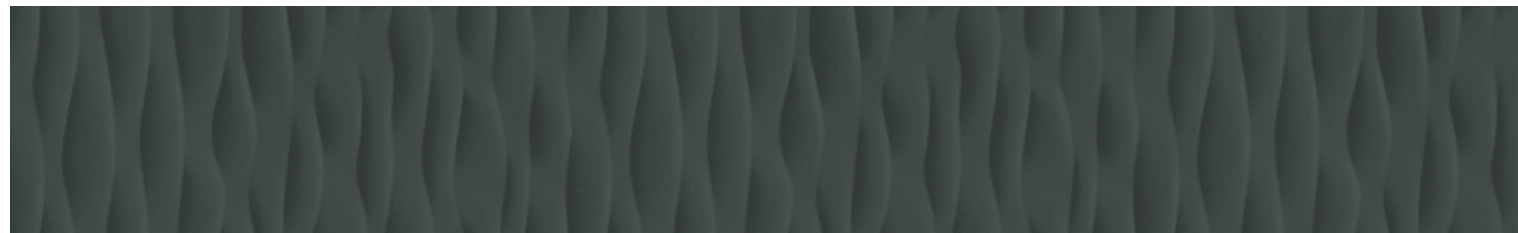
ASTRID

Monochrome

variants p. 230



01



02



03



04



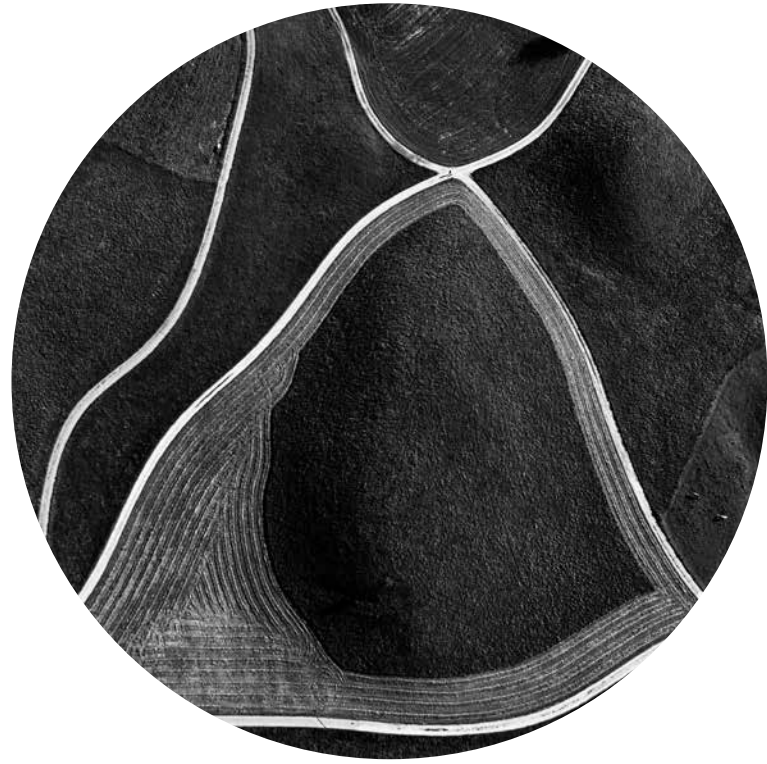
05



06







## CHAPTER 6















**TURE 01**  
*Nuances*

variants p. 198







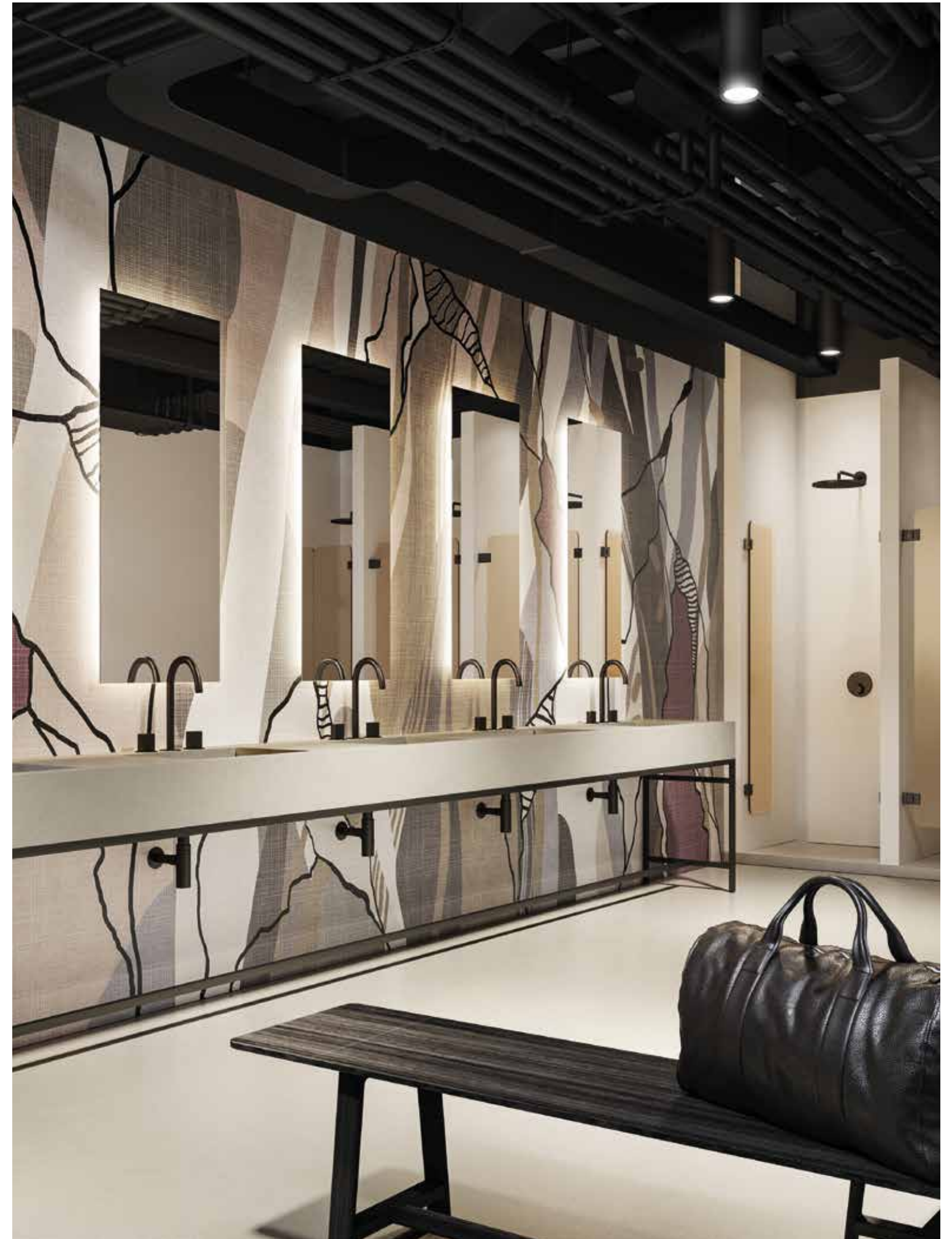






**WENDY 01**  
*Audace*

variants p. 227

















**OLIVIER 01**  
*Artistic*

variants p. 214











01



02



03



04



05



06







NUANCES

VARIANTS





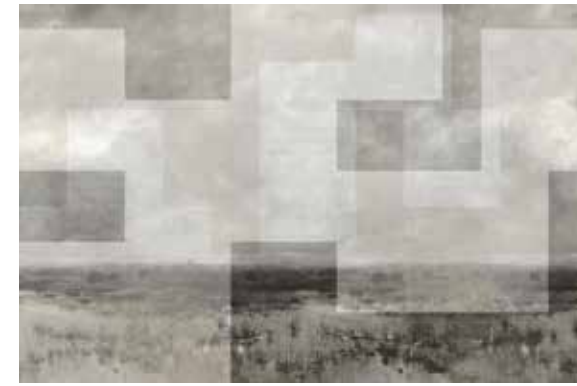
01



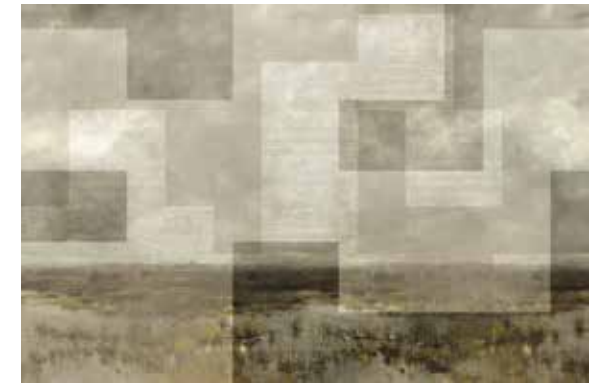
02

AIRA  
p. 22-23

ALIDA  
p. 114-115



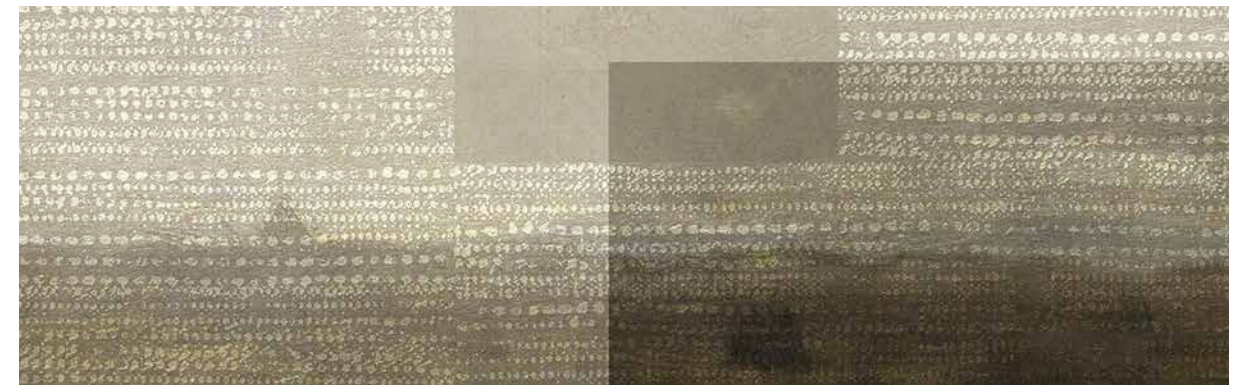
01



02



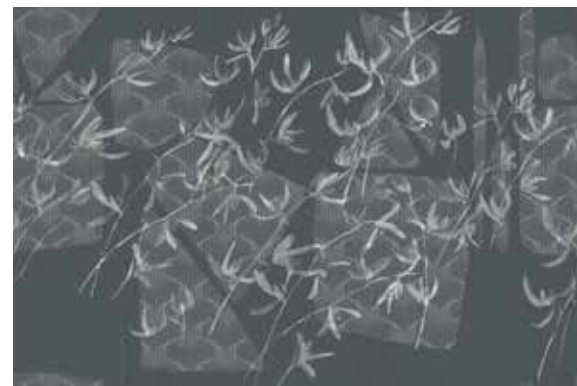
scale 1:10 AIRA 02



scale 1:10 ALIDA 02



01



02

AKIRA  
p. 106-107

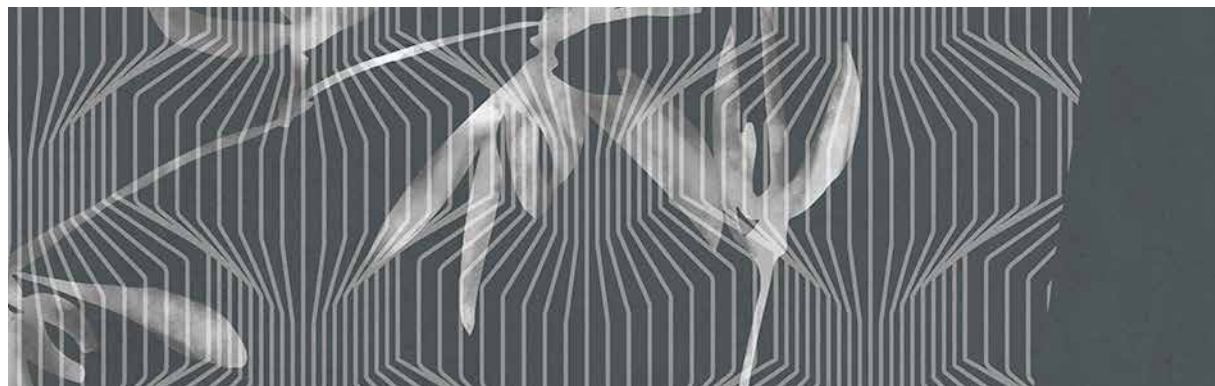
AMOS  
p. 168-169



01



02



scale 1:10 AKIRA 02



scale 1:10 AMOS 02





01

02

AXEL  
p. 110-111

BRUNILDE  
p. 140-141



01

02



scale 1:10 AXEL 02



scale 1:10 BRUNILDE 02

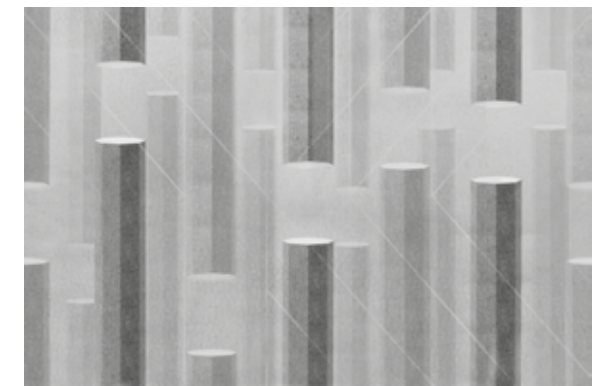


01

02

BASILIA  
p. 172-173

CHANTAL  
p. 102-103



01

02



scale 1:10 BASILIA 02



scale 1:10 CHANTAL 02





01



02

CONSUELO  
*p. 80-81*

DYLAN  
*p. 36-37*



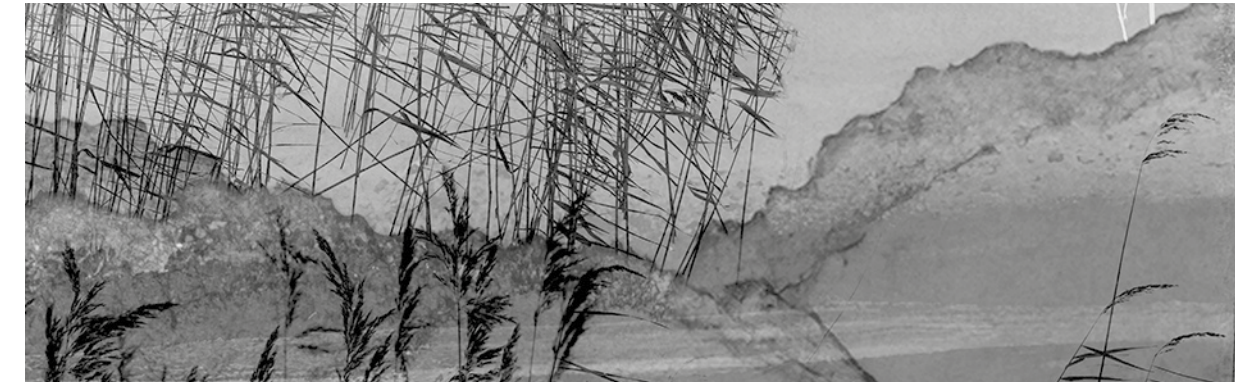
01



02



scale 1:10 CONSUELO 02



scale 1:10 DYLAN 02



01



02

DORIANE  
*p. 90-91*

FRANCINE  
*p. 62-63*



01



02

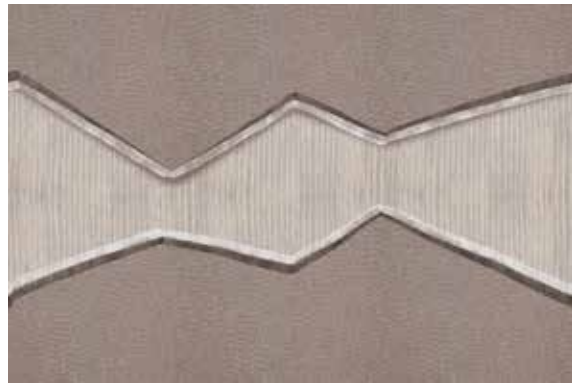


scale 1:10 DORIANE 02

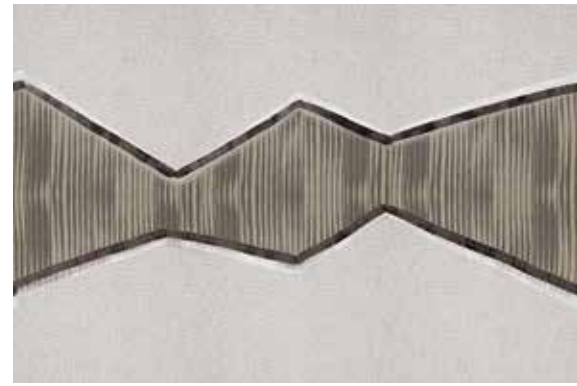


scale 1:10 FRANCINE 02





01



02

KAEDE  
p. 152-153

LEILA  
p. 136-137



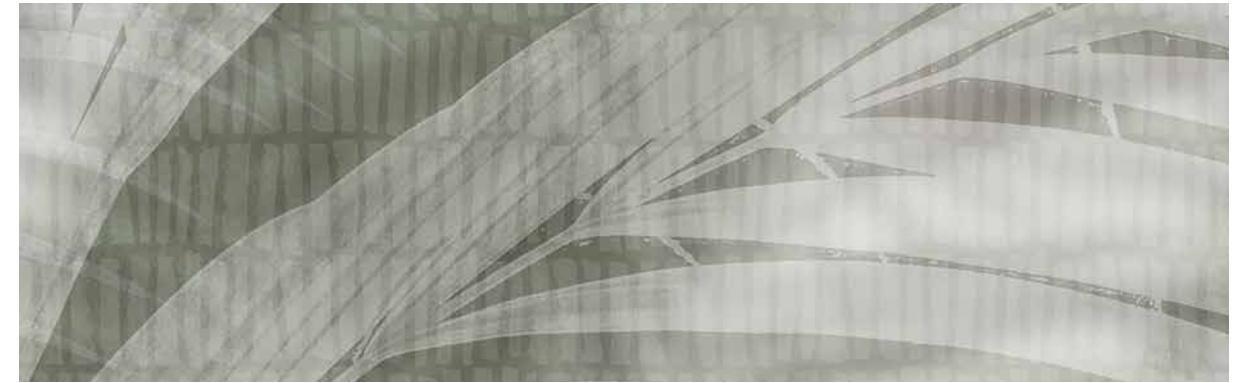
01



02



scale 1:10 KAEDE 02



scale 1:10 LEILA 02



01



02

KOSTA  
p. 180-181

MADARA  
p. 78/79



01



02



scale 1:10 KOSTA 02



scale 1:10 MADARA 02





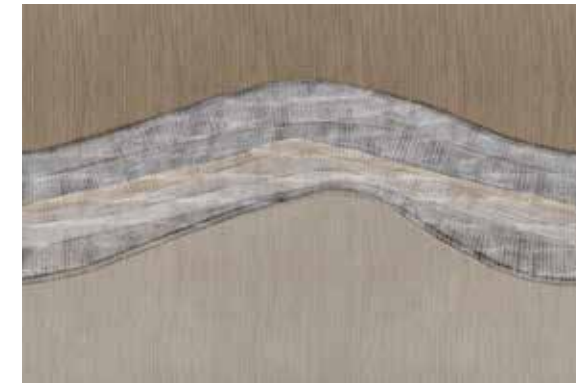
01



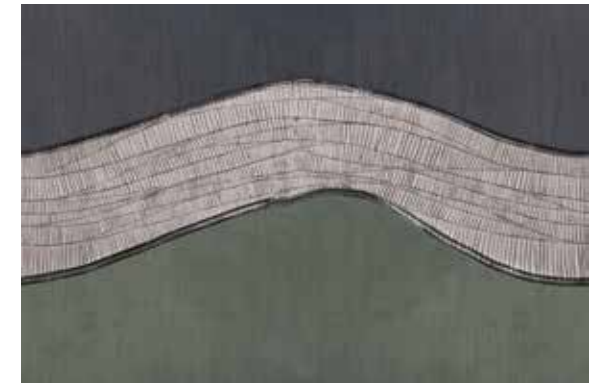
02

MIDORI  
p. 52-53

ONORIA  
p. 176-177



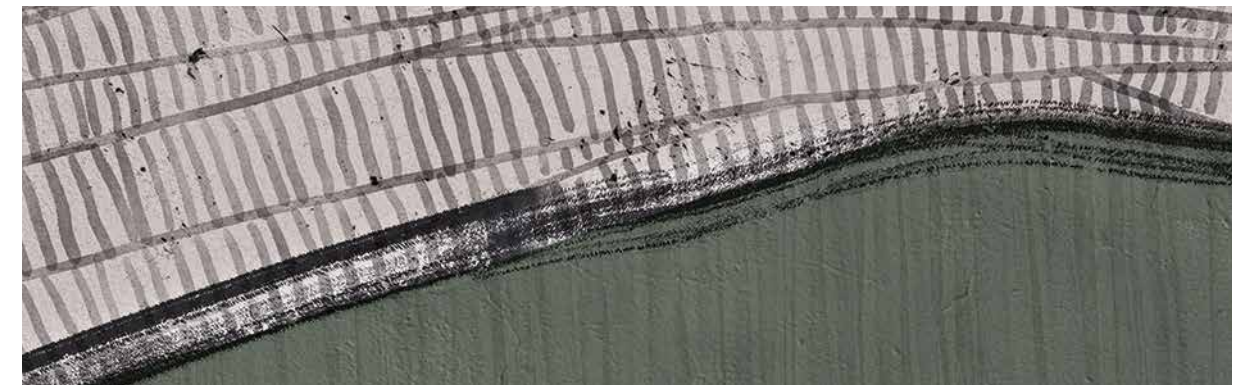
01



02



scale 1:10 MIDORI 02



scale 1:10 ONORIA 02



01



02

NINA  
p. 44-45

PATROCLO  
p. 18-19



01



02



scale 1:10 NINA 02



scale 1:10 PATROCLO 02





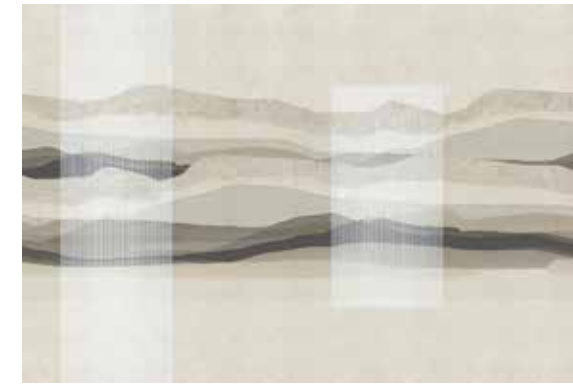
01



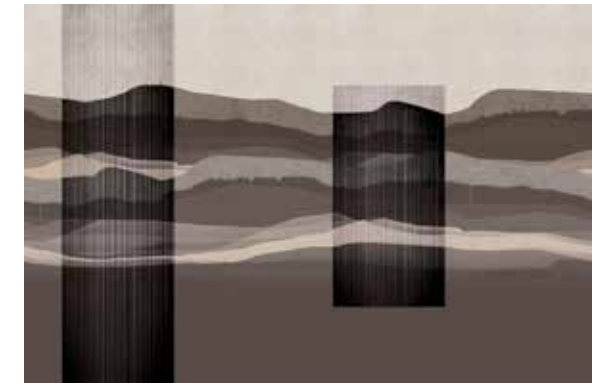
02

PETRONILLA  
p. 88-89

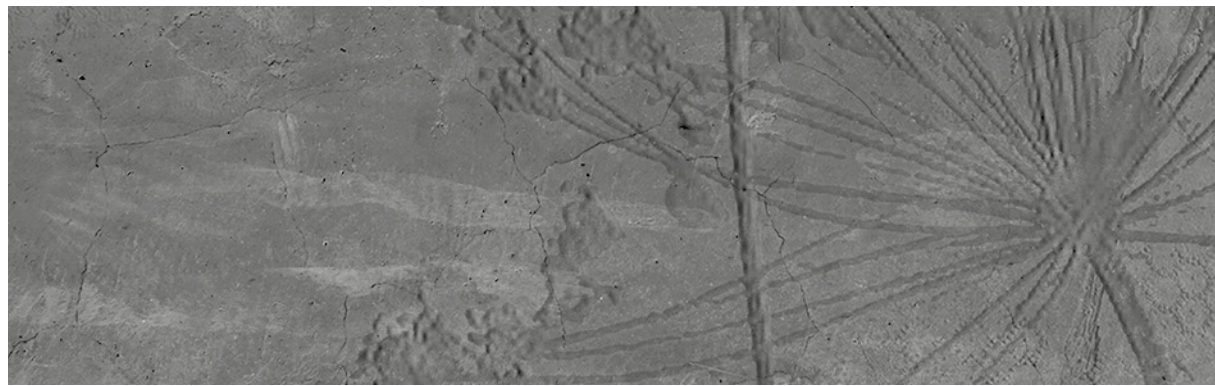
SIGGY  
p. 116-117



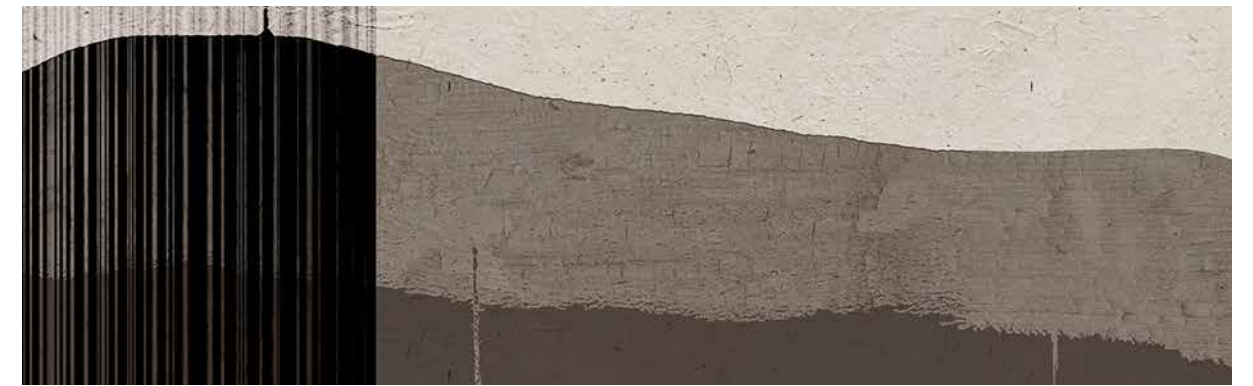
01



02



scale 1:10 PETRONILLA 02



scale 1:10 SIGGY 02



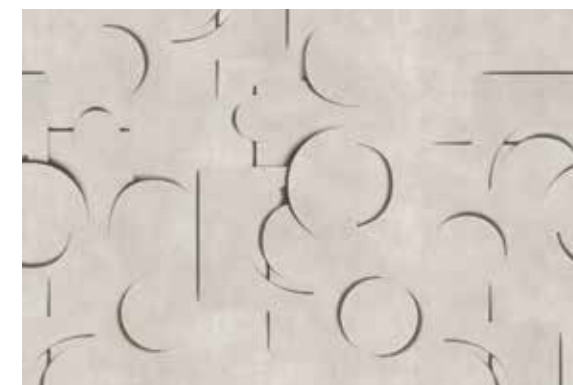
01



02

RUBY  
p. 48-49

TARA  
p. 144-145



01



02



scale 1:10 RUBY 02



scale 1:10 TARA 02





01



02

TURE  
*p. 164-165*



scale 1:10 TURE 02



01



02

VERENA  
*p. 20-21*



scale 1:10 VERENA 02





ARTISTIC

VARIANTS





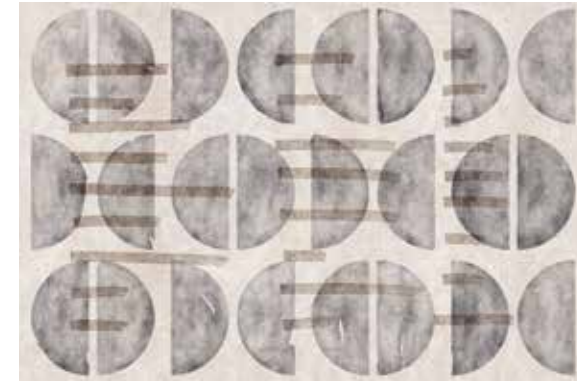
01



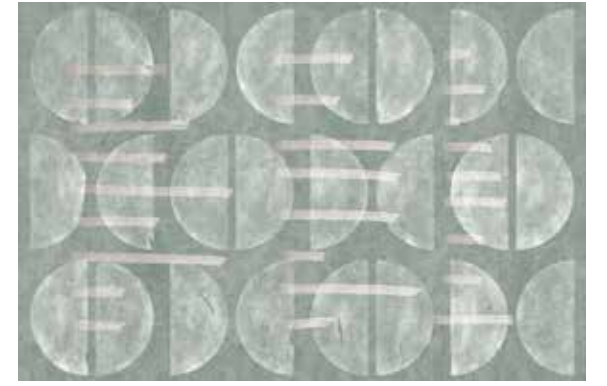
02

AKAME  
p. 28-29

ANGY  
p. 82-83



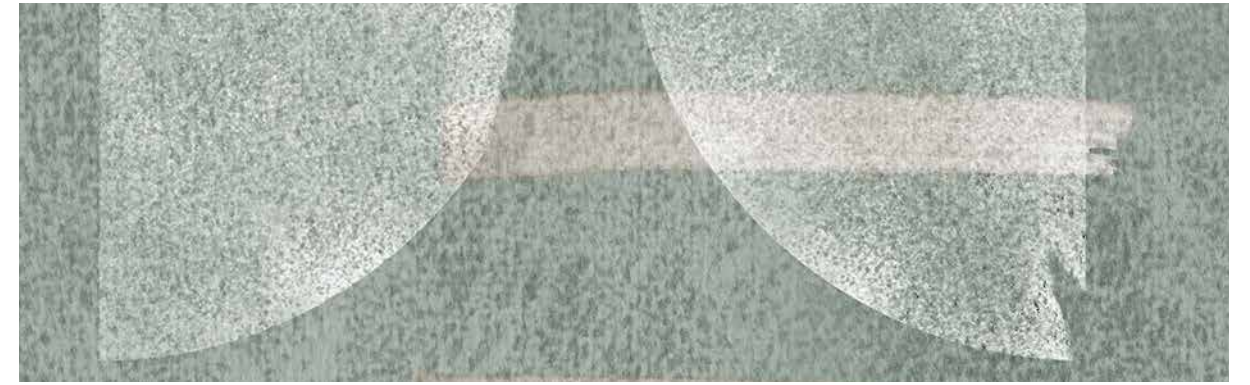
01



02



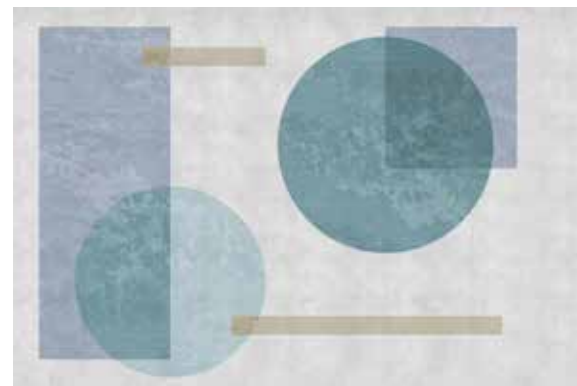
scale 1:10 AKAME 02



scale 1:10 ANGY 02



01



02

ALDESIRA  
p. 112-113

AUGUSTIN  
p. 160-161



01



02



scale 1:10 ALDESIRA 02



scale 1:10 AUGUSTIN 02





01



02

AUSILIA  
p. 118-119



01

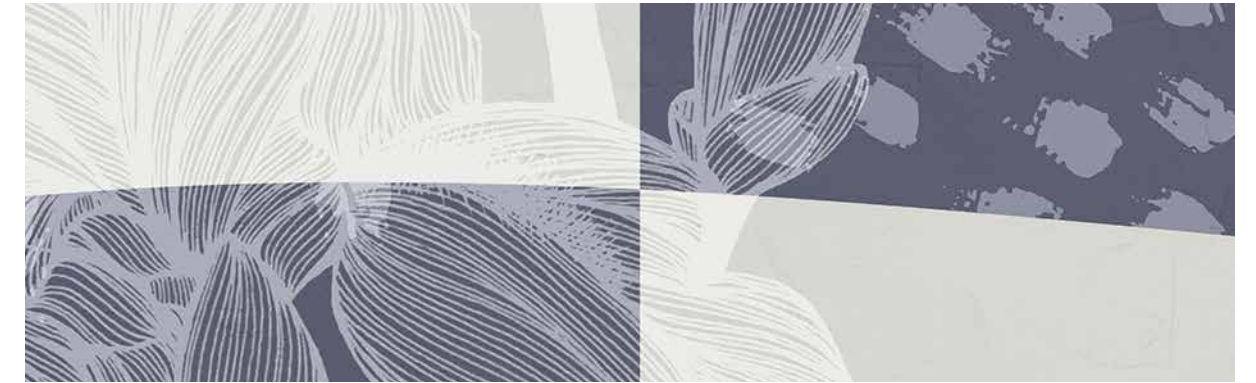


02

BENNY  
p. 54-55



scale 1:10 AUSILIA 02



scale 1:10 BENNY 02



01



02

BELMONT  
p. 60-61

BICE  
p. 76-77



01



02



scale 1:10 BELMONT 02

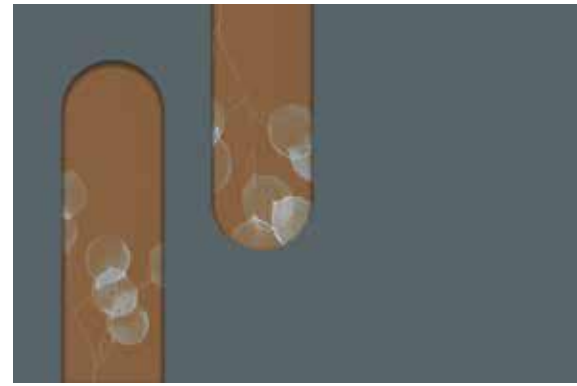


scale 1:10 BICE 02





01



02

BRENDA  
p. 16-17

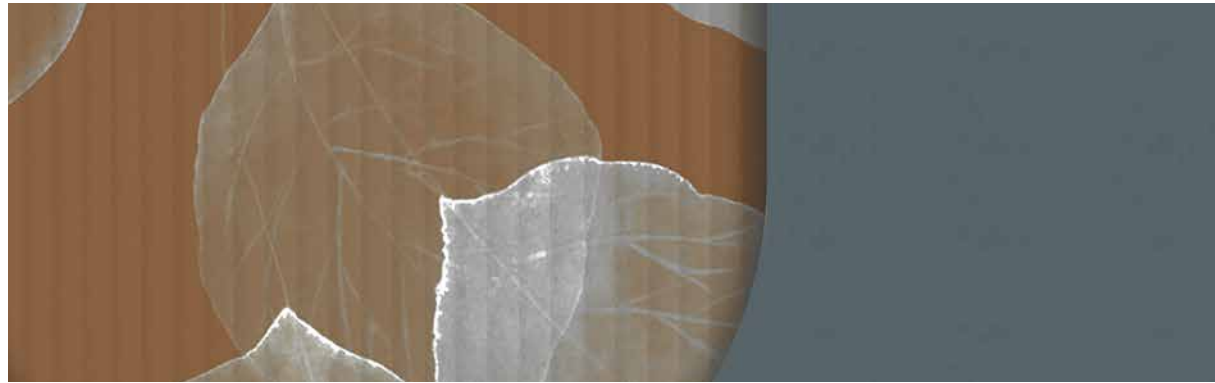
CERISA  
p. 64-65



01



02



scale 1:10 BRENDA 02



scale 1:10 CERISA 02



01



02

CASSANDRA  
p. 104-105

CLIZIA  
p. 174-175



01



02



scale 1:10 CASSANDRA 02



scale 1:10 CLIZIA 02





01



02

DOROTHEA  
p. 50-51

EVITA  
p. 94-95



01



02



scale 1:10 DOROTHEA 02



scale 1:10 EVITA 02



01



02

ETIENNE  
p. 148-149

FLAVIANA  
p. 162-163



01



02



scale 1:10 ETIENNE 02



scale 1:10 FLAVIANA 02





GISLENA  
p. 134-135

ISIDE  
p. 166-167



01

02

01

02



scale 1:10 GISLENA 02



scale 1:10 ISIDE 02



IANA  
p. 66-67

JACQUES  
p. 30-31



01

02

01

02



scale 1:10 IANA 02



scale 1:10 JACQUES 02





01



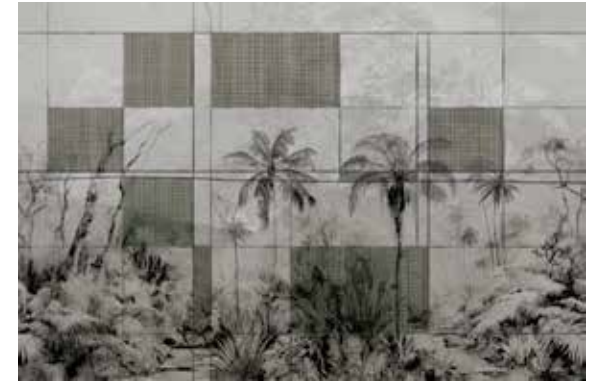
02

JAN  
p. 138-139

MILLAR  
p. 132-133



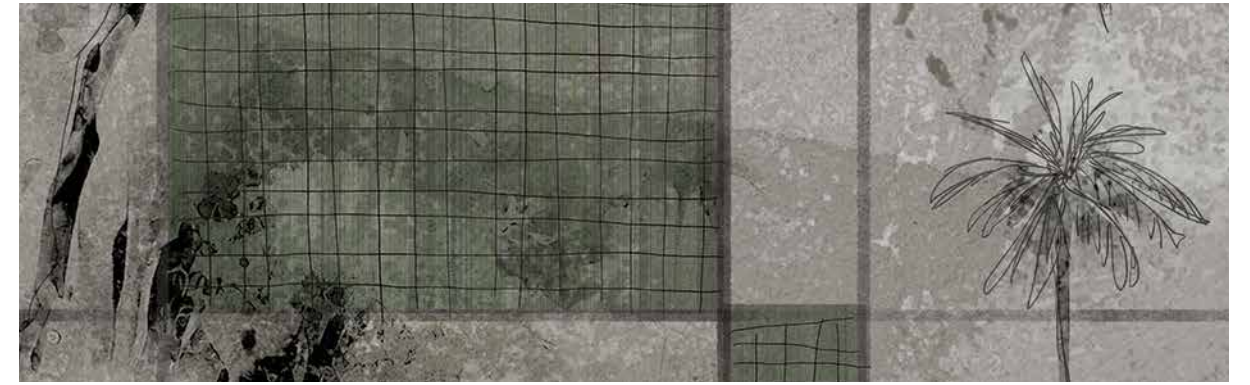
01



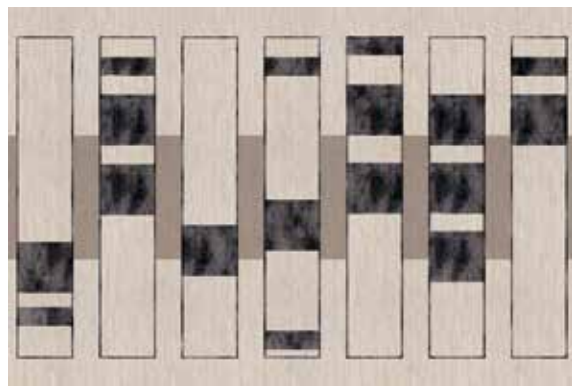
02



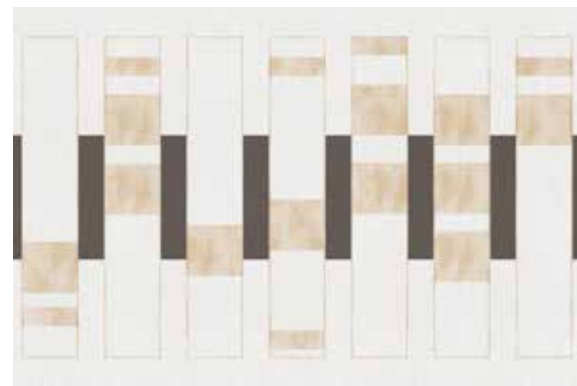
scale 1:10 JAN 02



scale 1:10 MILLAR 02



01



02

JOSI  
p. 74-75

NOELIA  
p. 130-131



01



02



scale 1:10 JOSI 02



scale 1:10 NOELIA 02





01



02

NOEMI  
p. 34-35

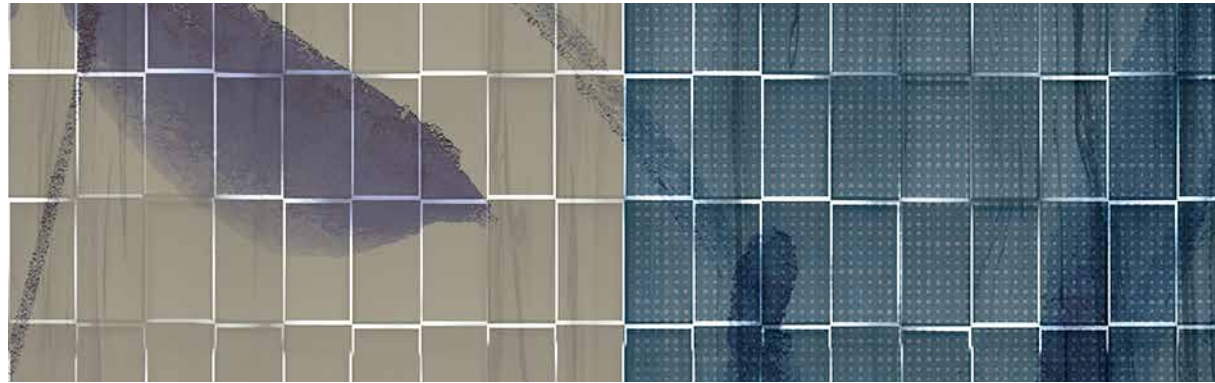
PALMIRA  
p. 108-109



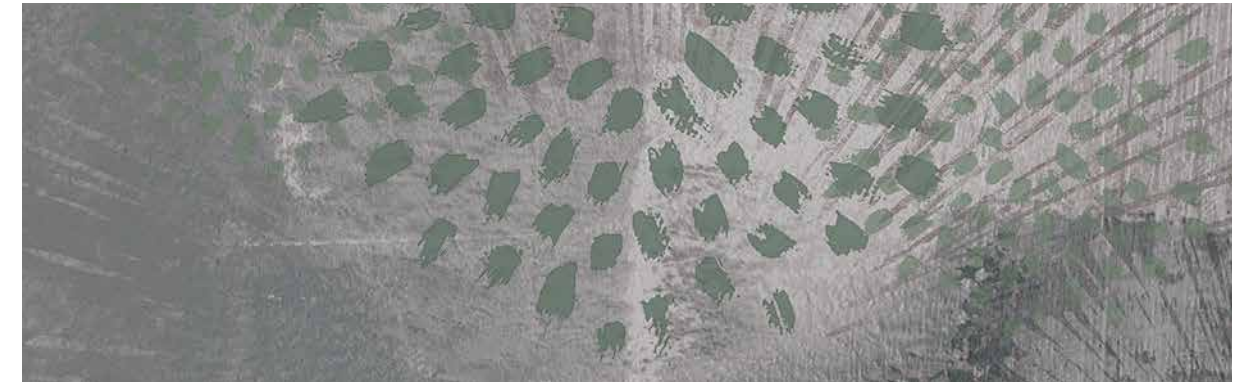
01



02



scale 1:10 NOEMI 02



scale 1:10 PALMIRA 02



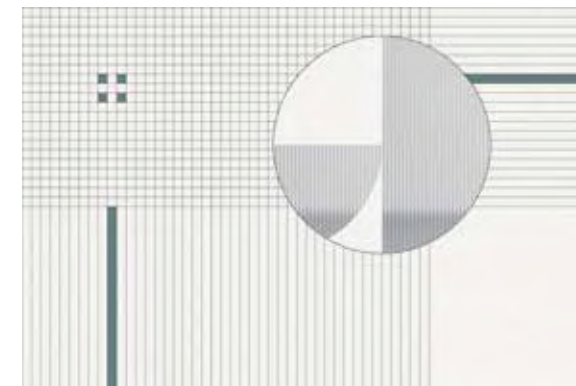
01



02

OLIVIER  
p. 178-179

PASKALO  
p. 146-147



01



02

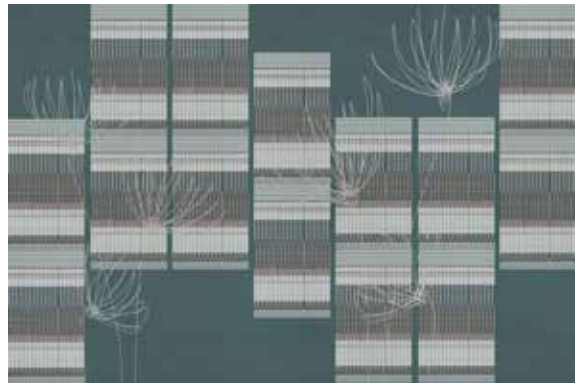


scale 1:10 OLIVIER 02

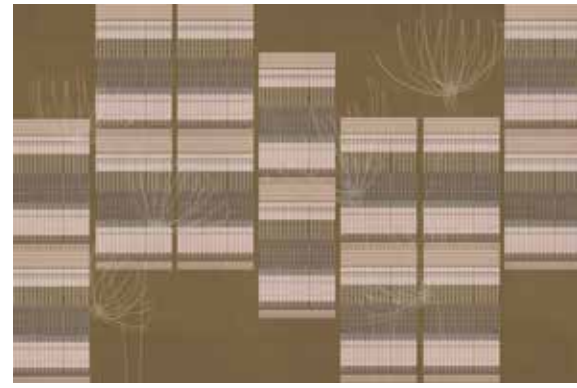


scale 1:10 PASKALO 02





01



02

SANTE  
p. 46-47

XAVIER  
p. 142-143



01



02



scale 1:10 SANTE 02



scale 1:10 XAVIER 02



01



02

TORVI  
p. 26-27

YORI  
p. 150-151



01



02



scale 1:10 TORVI 02



scale 1:10 YORI 02





AUDACE

VARIANTS





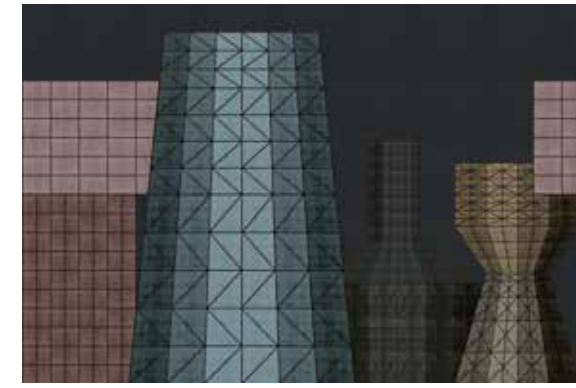
01



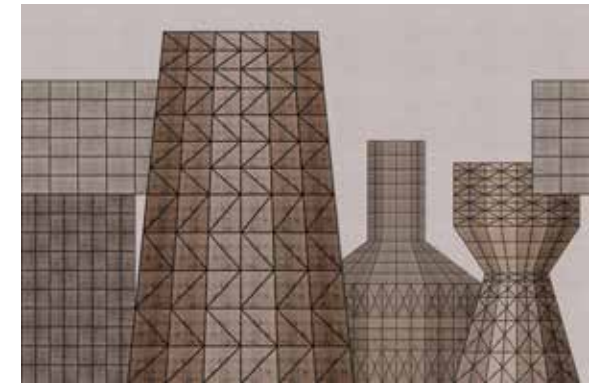
02

ALIOSHA  
p. 58-59

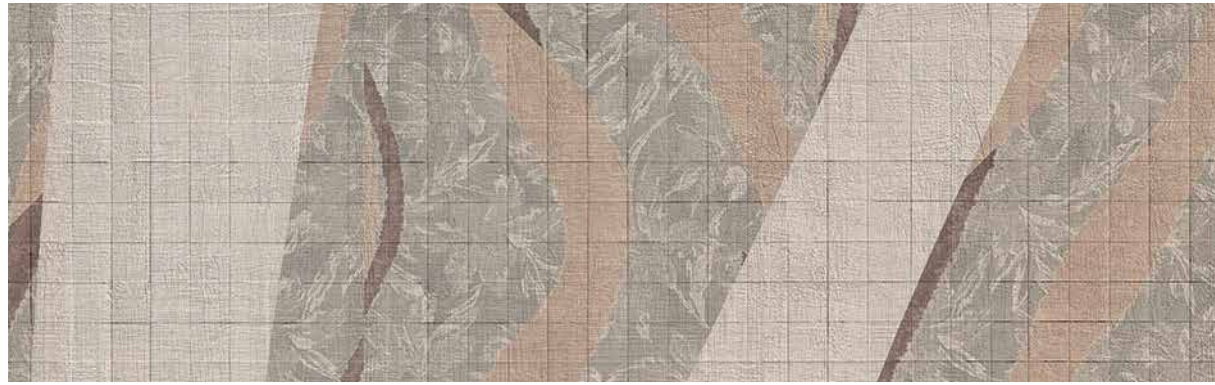
BETTA  
p. 32-33



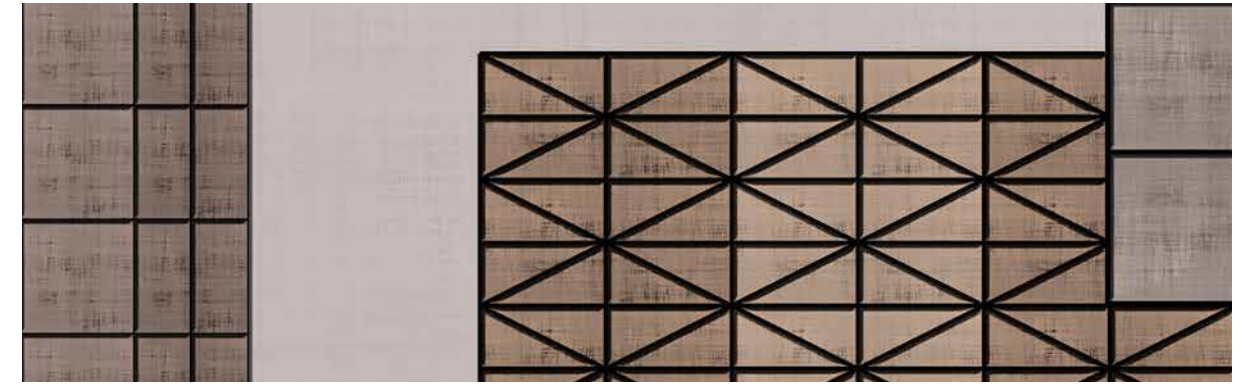
01



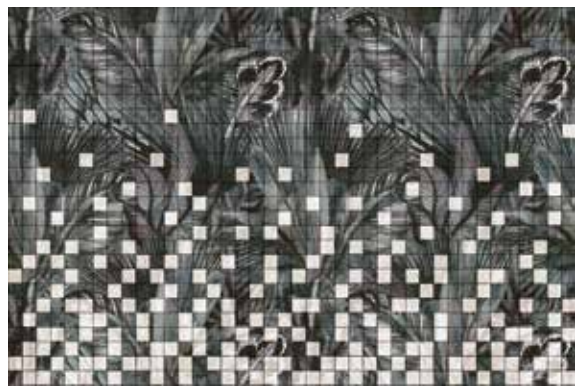
02



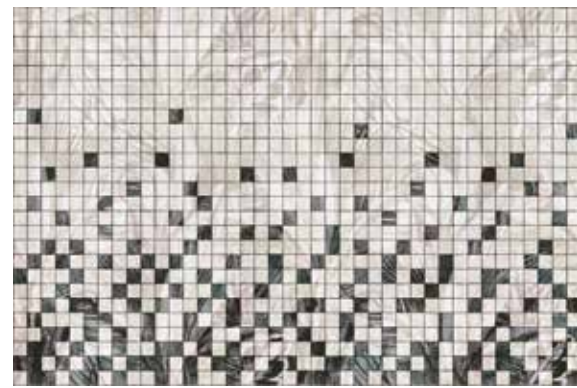
scale 1:10 ALIOSHA 02



scale 1:10 BETTA 02



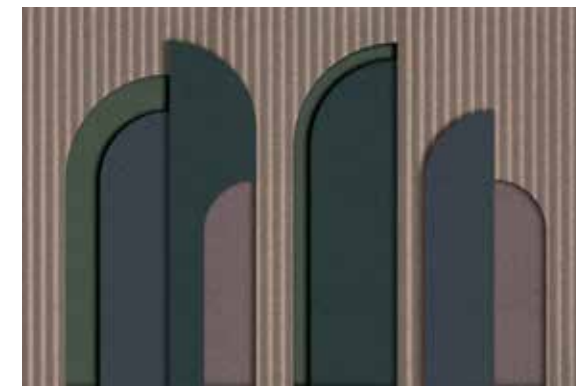
01



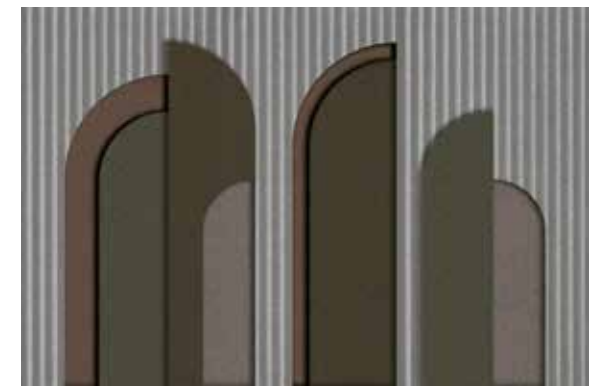
02

ARIEL  
p. 24-25

CECILE  
p. 92-93



01



02

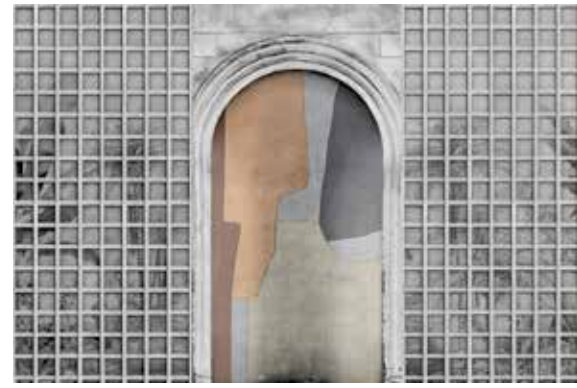
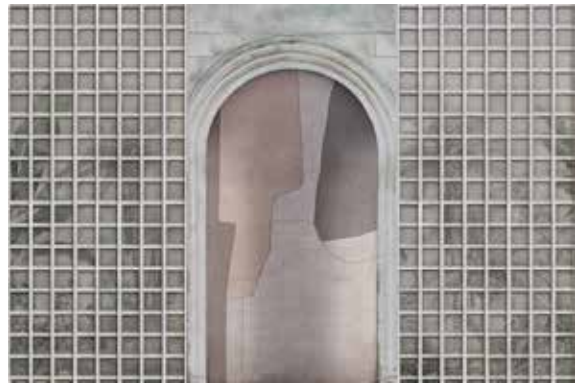


scale 1:10 ARIEL 02



scale 1:10 CECILE 02





01

02

CLELIA  
p. 38-39

KAZUO  
p. 68-69

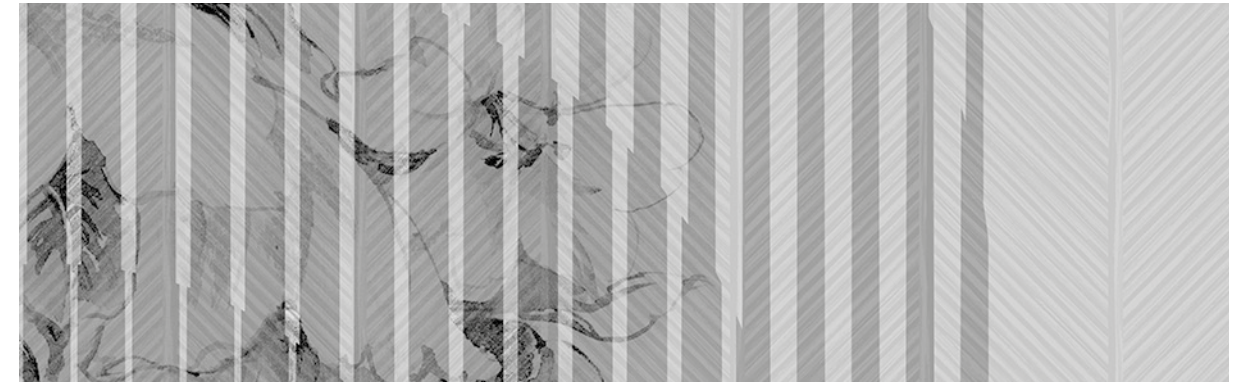


01

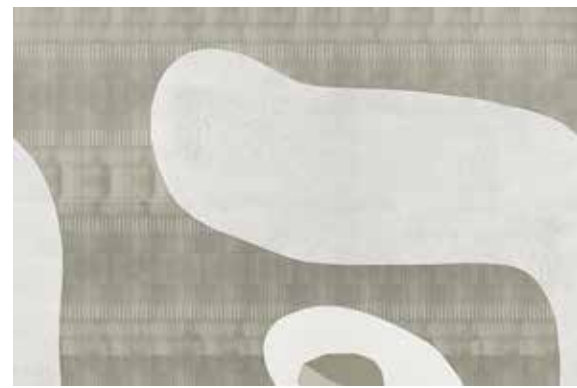
02



scale 1:10 CLELIA 02



scale 1:10 KAZUO 02

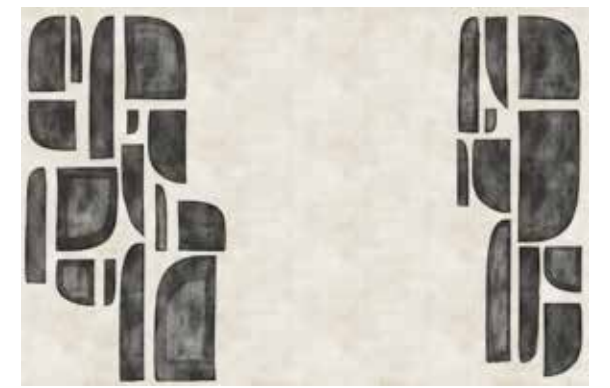
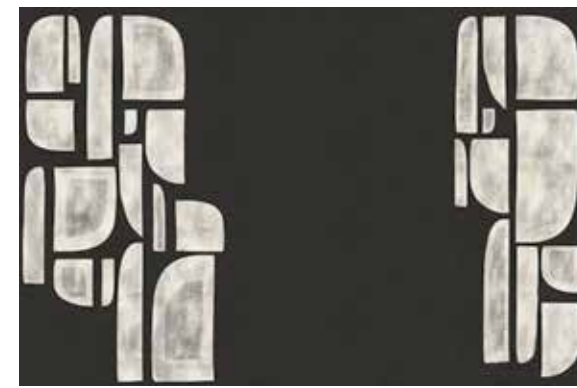


01

02

DEAN  
p. 14-15

KIKI  
p. 122-123



01

02



scale 1:10 DEAN 02



scale 1:10 KIKI 02





01

02

LUCIEN  
p. 56-57

NICLA  
p. 158-159



01

02



scale 1:10 LUCIEN 02



scale 1:10 NICLA 02



01

02

MEI  
p. 124-125

NOSHIMA  
p. 84-85



01

02



scale 1:10 MEI 02



scale 1:10 NOSHIMA 02





01



02

RENO  
p. 86-87

WENDY  
p. 170-171



01



02



scale 1:10 RENO 02



scale 1:10 WENDY 02



01



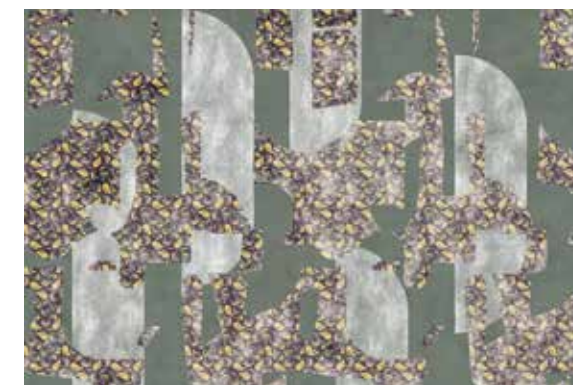
02

SAMIR  
p. 120-121

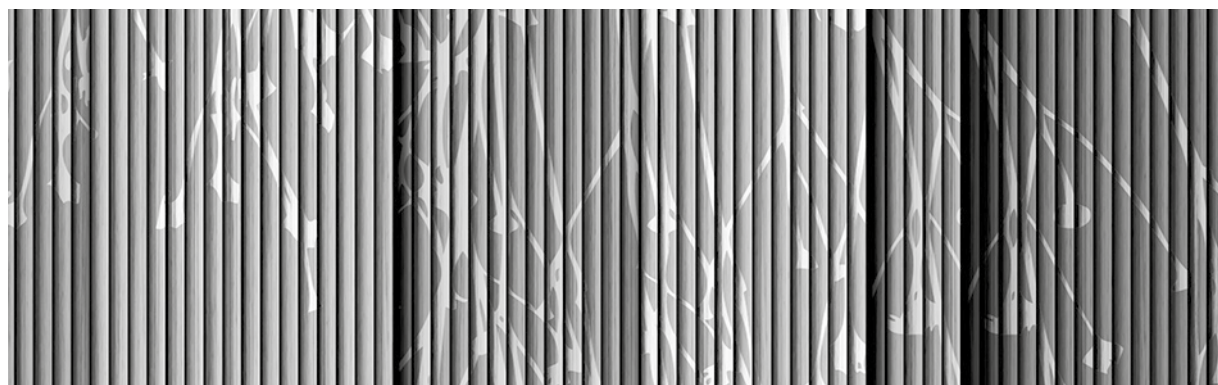
ZEFFIRO  
p. 96-97



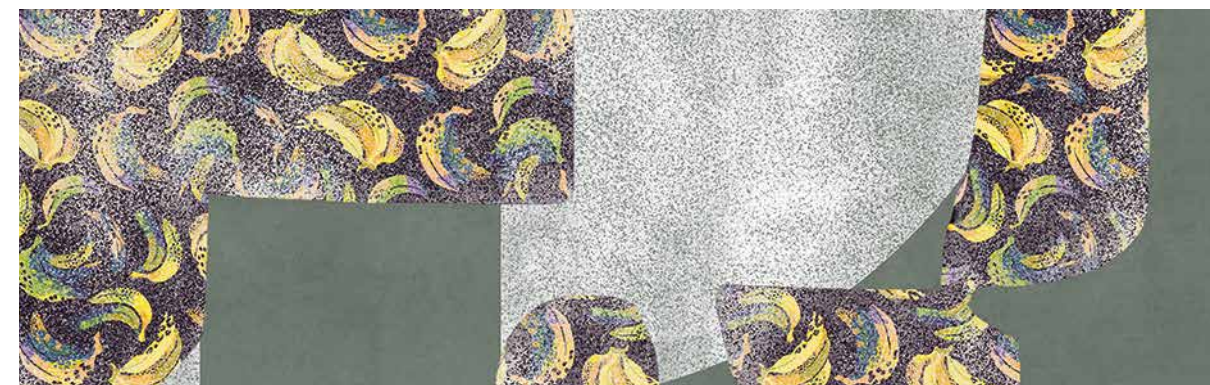
01



02



scale 1:10 SAMIR 02



scale 1:10 ZEFFIRO 02





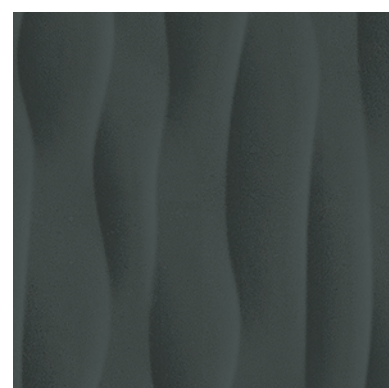
# MONOCHROME

VARIANTS





01



02



03

ASTRID  
p. 154-155



04



05



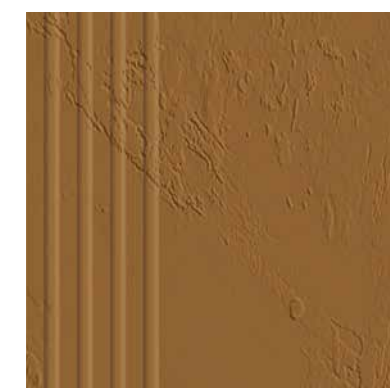
06

scale 1:10

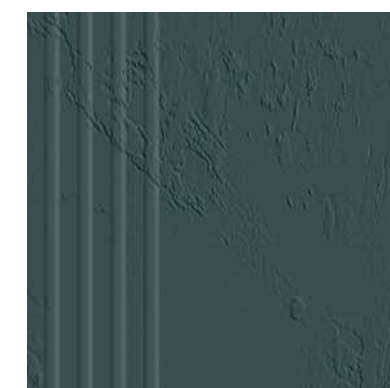
CHRISTOS  
p. 98-99



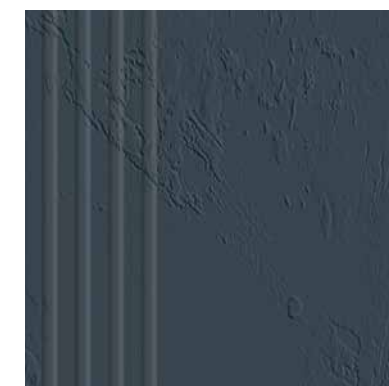
01



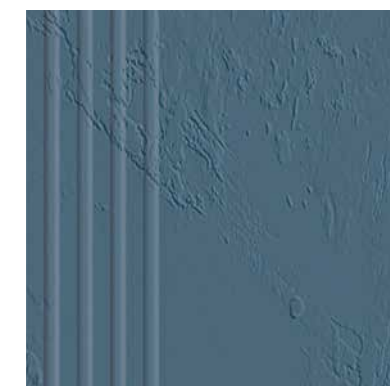
02



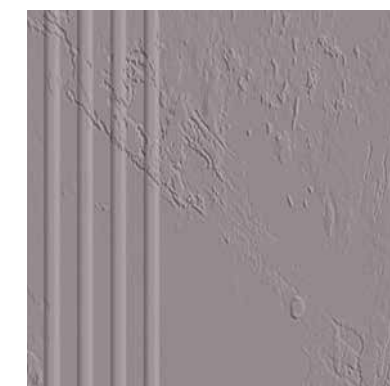
03



04

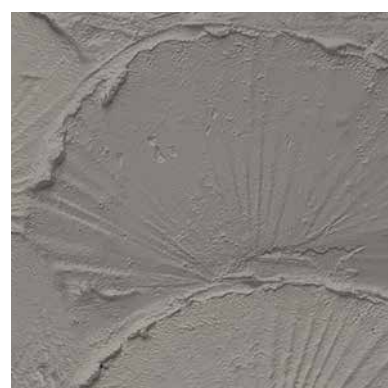


05



06

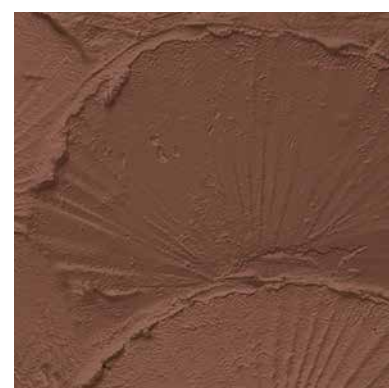
scale 1:10



01

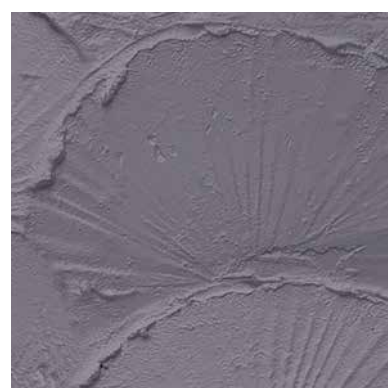


02

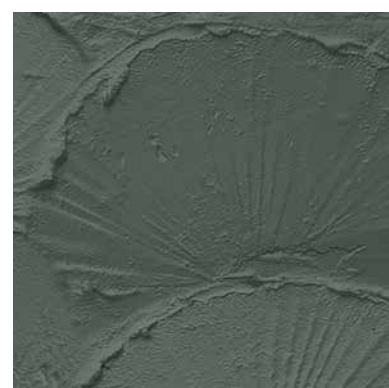


03

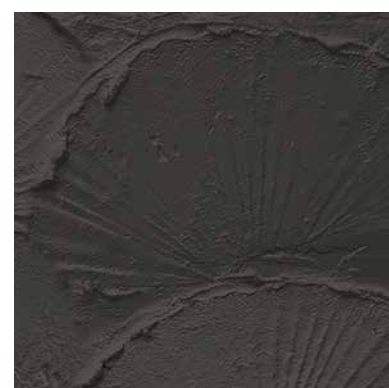
BARNABA  
p. 70-71



04



05



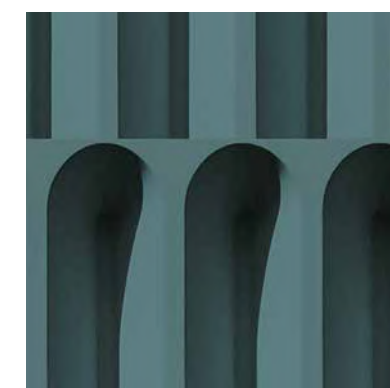
06

scale 1:10

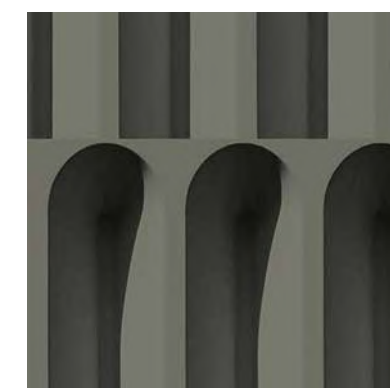
DIOMIRA  
p. 40-41



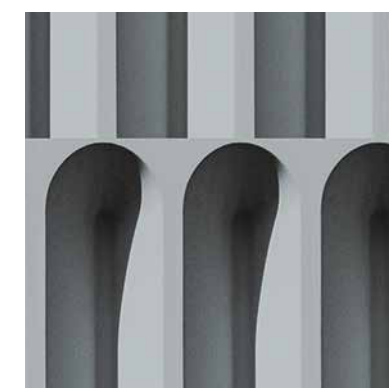
01



02



03



04



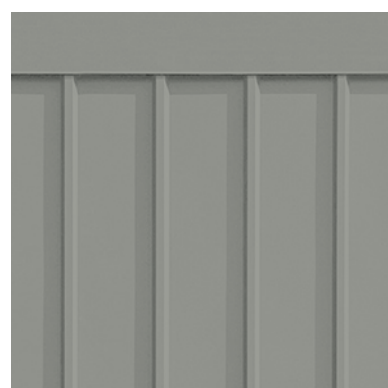
05



06

scale 1:10

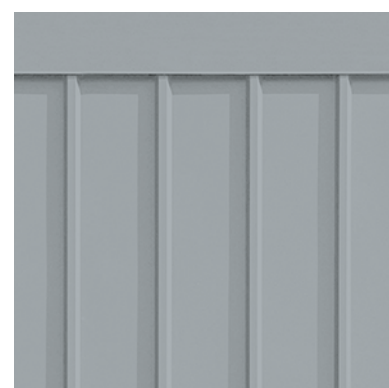




01

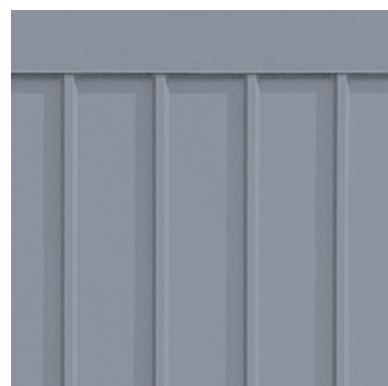


02



03

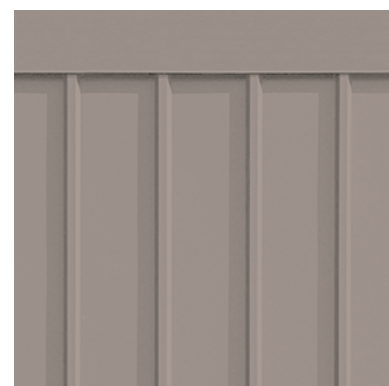
RAFAEL  
*p. 126-127*



04



05



06

scale 1:10



01



02



03

WANDO  
*p. 182-183*



04



05



06

scale 1:10









**INSTABILELAB®**

**INSTABILELAB srl**

**Headquarters: Via Rivale, 59 - 30036 - Santa Maria di Sala - VENEZIA - Italy**

**The Club: Via Einstein, 8 - 30036 - Santa Maria di Sala - VENEZIA - Italy**

**Tel. +39 041 5760611 - [info@instabilelab.it](mailto:info@instabilelab.it)**

**[www.instabilelab.com](http://www.instabilelab.com)**



[instabilelab.com](http://instabilelab.com)