



24k

Gold & Rose Gold



INSTABILELAB®
WALLCOVERING - TEXTILE - CARPETS



INSTABILELAB®

WALLCOVERING - TEXTILE - CARPETS

24 k

gold & rose gold

24k

gold & rose gold

L'oro non è solo un colore, è una materia, un'idea, un simbolo, un'ambizione. Uno dei protagonisti della nostra storia, di ogni periodo e di ogni cultura perchè quando questo prezioso metallo compare immediatamente crea attorno a sè un alone di luce e valore.

Instabilelab arricchisce le sue collezioni con una proposta a 24 carati, meravigliosi scenari declinati nella varianti GOLD e ROSE GOLD, stampabili rispettivamente su carta Prestige e sulla nuova Rose Prestige. Natura e geometrie si mescolano creando grafiche vive e fluttuanti che catturano la scena della stanza come iconiche opere d'arte. I colori cambiano quando toccano l'oro e l'oro rosa trasformandosi in sfumature uniche e ricercate.

Una collezione visionaria per scoprire l'oro, desiderarlo e conquistarlo.

Gold is not just a colour, it is a material, an idea, a symbol, an ambition. One of the protagonists of our history, of every period and every culture because when this precious metal appears it immediately creates a halo of light and value around itself.

Instabilelab enriches its collections with a 24-carat proposal, marvellous sceneries declined in the GOLD and ROSE GOLD variants, printable respectively on Prestige and on new Rose Prestige wallpaper. Nature and geometry blend to create vivid, floating graphics that capture the room scene like iconic works of art. The colours change when they touch gold and rose gold, transforming into unique and sophisticated shades.

A visionary collection to discover gold, desire it and conquer it.

index

| | |
|-----------------|----|
| GRAPHICS INDEX | 07 |
| ABOUT US | 09 |
| PRESTIGE | 10 |
| 24 k COLLECTION | |
| CHAPTER 1 | 12 |
| CHAPTER 2 | 45 |
| VARIANTS | 77 |



Le colorazioni dei prodotti riportati sul catalogo sono da ritenersi puramente indicative e non hanno valore di prova colore.
La stessa grafica stampata su materiali diversi (parato, tappeti, tessuti) potrebbe presentare differenze di tonalità dovute alla diversa natura dei supporti.

*The colours printed in this catalogue have to be considered merely indicative and have no colour proof value.
The same graphic printed on different materials (wallpaper, carpet, fabric) may show differences in colour tone due to the different materials.*

**graphics
index**

| | | |
|--------------|----|----|
| ALTHEA | 19 | 78 |
| ANYA | 68 | 78 |
| AYAME | 35 | 79 |
| BLAIR | 42 | 79 |
| BROOKE | 22 | 80 |
| CANARIO NERO | 65 | 80 |
| CHANEL | 14 | 81 |
| CLAIRE | 74 | 81 |
| CORINNA | 48 | 82 |
| DAISY | 38 | 82 |
| GOLD FISH | 66 | 83 |
| GOLDEN LEAF | 62 | 83 |
| HEIDI | 27 | 84 |
| JUSTINE | 32 | 84 |
| LARISA | 40 | 85 |
| MALLORY | 20 | 85 |
| MARIGOLD | 28 | 86 |
| MARLENE | 52 | 86 |
| MYA | 51 | 87 |
| OFELIA | 56 | 87 |
| OLGA | 54 | 88 |
| ORINTENSO | 73 | 88 |
| PAIGE | 60 | 89 |
| PAULINE | 30 | 89 |
| PENNY | 59 | 90 |
| RED MOUNTAIN | 70 | 90 |
| THEA | 46 | 91 |
| VIVIENNE | 24 | 91 |
| ZELINDA | 36 | 92 |
| ZOE | 16 | 92 |



ABOUT US

Un'azienda veneziana dall'inesauribile creatività, Instabilelab propone la propria personale ed inedita interpretazione della carta da parati rimescolando idee e stili diversi, creando abbinamenti estetico-concettuali inediti, per dare reale valore e personalità agli spazi abitativi.

Innumerevoli sono i pattern e le atmosfere che l'azienda presenta anche grazie allo studio di texture e di nuove modalità di impiego e applicazione. Instabilelab, infatti, supera i limiti dell'utilizzo del parato, che progetta in un'ottica di continuum grafico realizzabile attraverso una serie di prodotti e tessuti dedicati a chi vuole realizzare un'atmosfera più che un ambiente.

Non solo creatività ma anche tecnologia: l'azienda ha il know how necessario per riprodurre le sue grafiche su diversi tipi di supporto e per coprire ogni aspetto del living indoor (pareti, soffitti, pavimenti, zone umide, elementi d'arredo, tessuti) e outdoor, grazie all'impiego di rivestimenti resistenti agli agenti atmosferici.

A Venetian company of inexhaustible creativity, Instabilelab presents its own personal and original interpretation of wallpaper, mixing different ideas and styles, creating new aesthetic-conceptual combinations to give real value and personality to living spaces.

The company presents countless patterns and atmospheres, also thanks to the study of textures and new methods of use and application.

Instabilelab goes beyond the limits of the use of wallpaper, which it designs with a graphic continuum that can be achieved through a series of products and fabrics dedicated to those who want to create an atmosphere rather than an environment.

Not only creativity but also technology: the company has the necessary know-how to reproduce its graphics on different types of support and to cover every aspect of indoor living (walls, ceilings, floors, wet areas, furnishing elements, fabrics) and outdoor, thanks to the use of weather-resistant coatings.



Prestige

La collezione 24k è dedicata esclusivamente alla stampa su materiali preziosi in cui il supporto diventa esso stesso colore e carattere distintivo della grafica. Prestige e Rose Prestige sono le proposte di Instabilelab per i parati dorati, a base oro e a base oro rosa.

Un supporto vinilico accoppiato con foil oro grazie al quale le grafiche si trasformano e prendono vita con riflessi cangianti e lussuosi. La strada dell'oro per Instabilelab è iniziata con la collezione Oronero e prosegue con 24 k un catalogo che rappresenta l'evoluzione stilistica della creatività del brand.

The 24k collection is exclusively dedicated to printing on precious materials where the substrate itself becomes the colour and distinctive feature of the graphics. Prestige and Rose Prestige are the Instabilelab proposals for gold and rose gold-based wallcoverings.

A vinyl support coupled with gold foil thanks to which the graphics are transformed and come to life with iridescent and luxurious reflections.

The gold road for Instabilelab began with the Oronero collection and continues with 24k, a catalogue representing the stylistic evolution of the brand's creativity.

Chapter 1





ALTHEA rose gold
24 k

variants p. 78







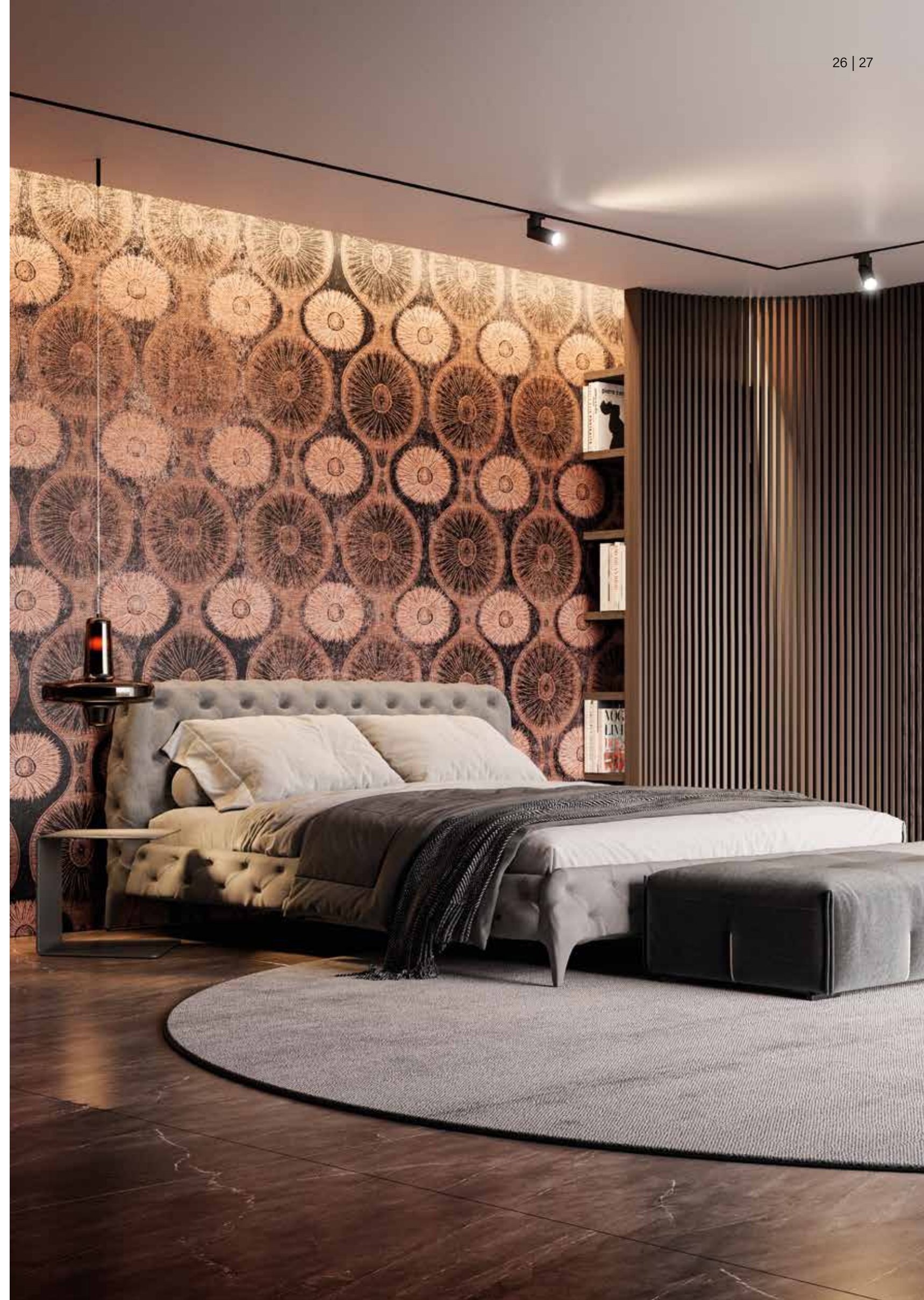
BROOKE gold
24 k

variants p. 80

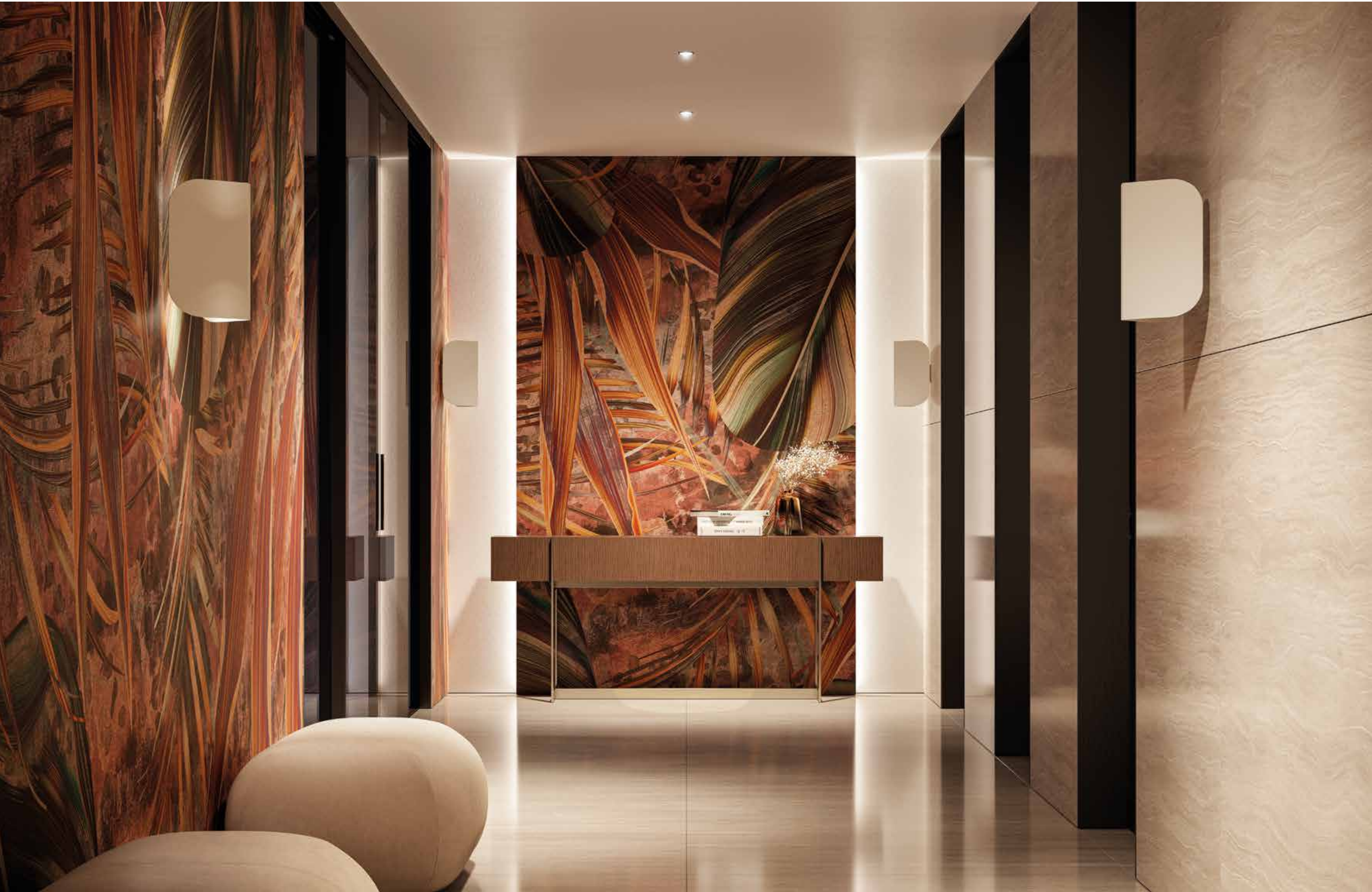


HEIDI rose gold
24 k

variants p. 84



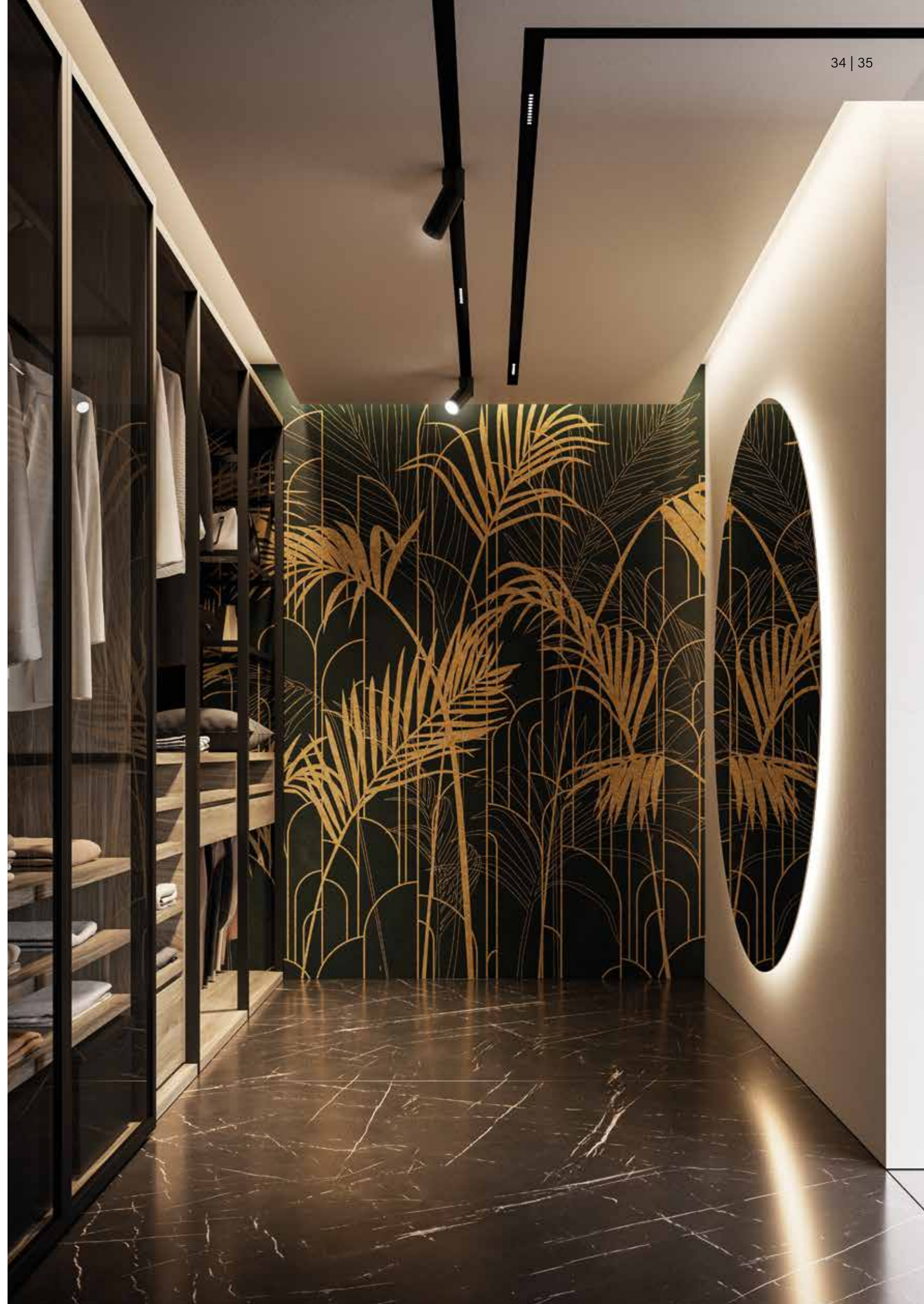




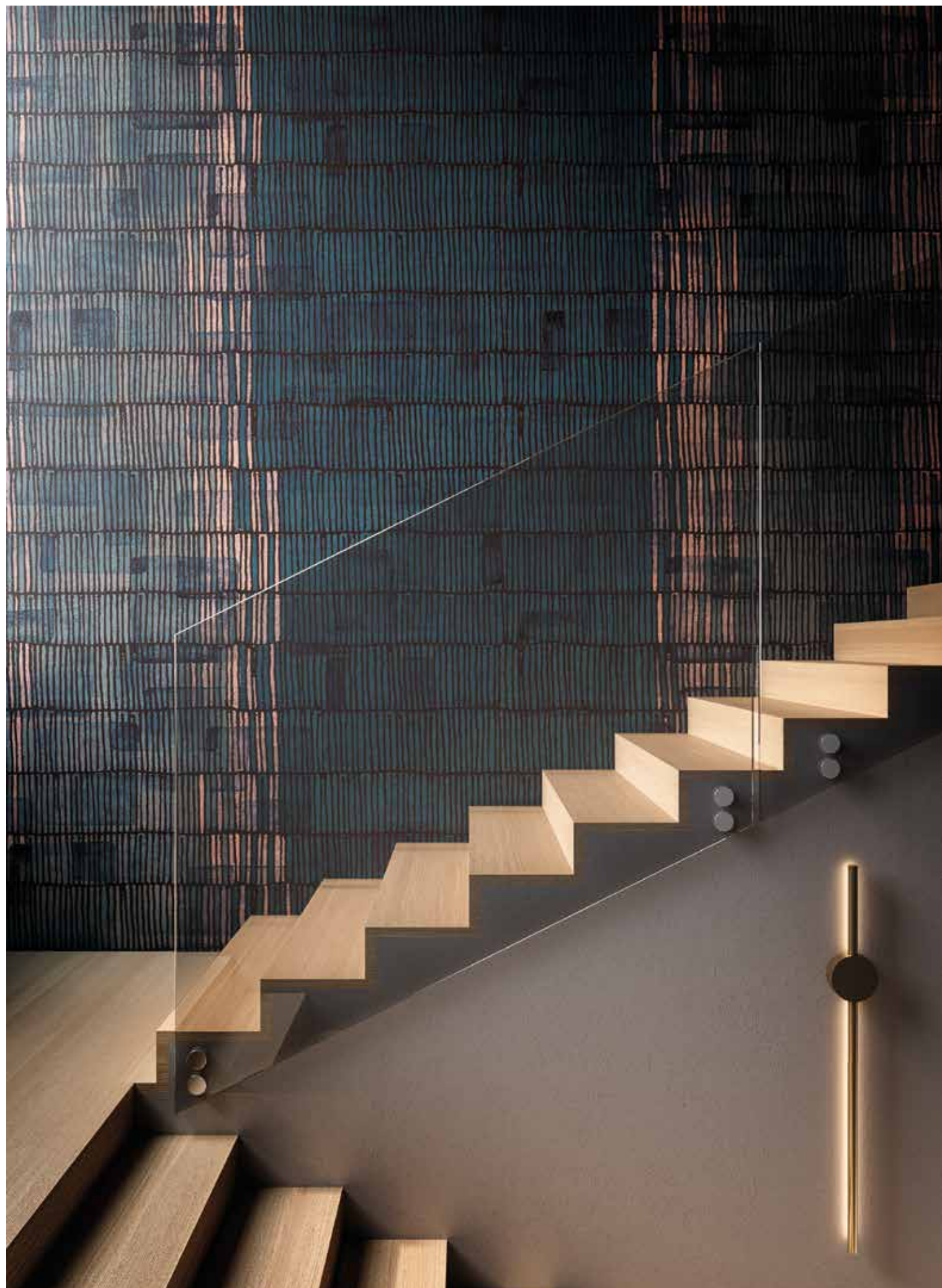


AYAME gold
24 k

variants p. 79







DAISY rose gold
24 k

variants p. 82





Chapter 2





MYA gold
24 k

variants p. 87

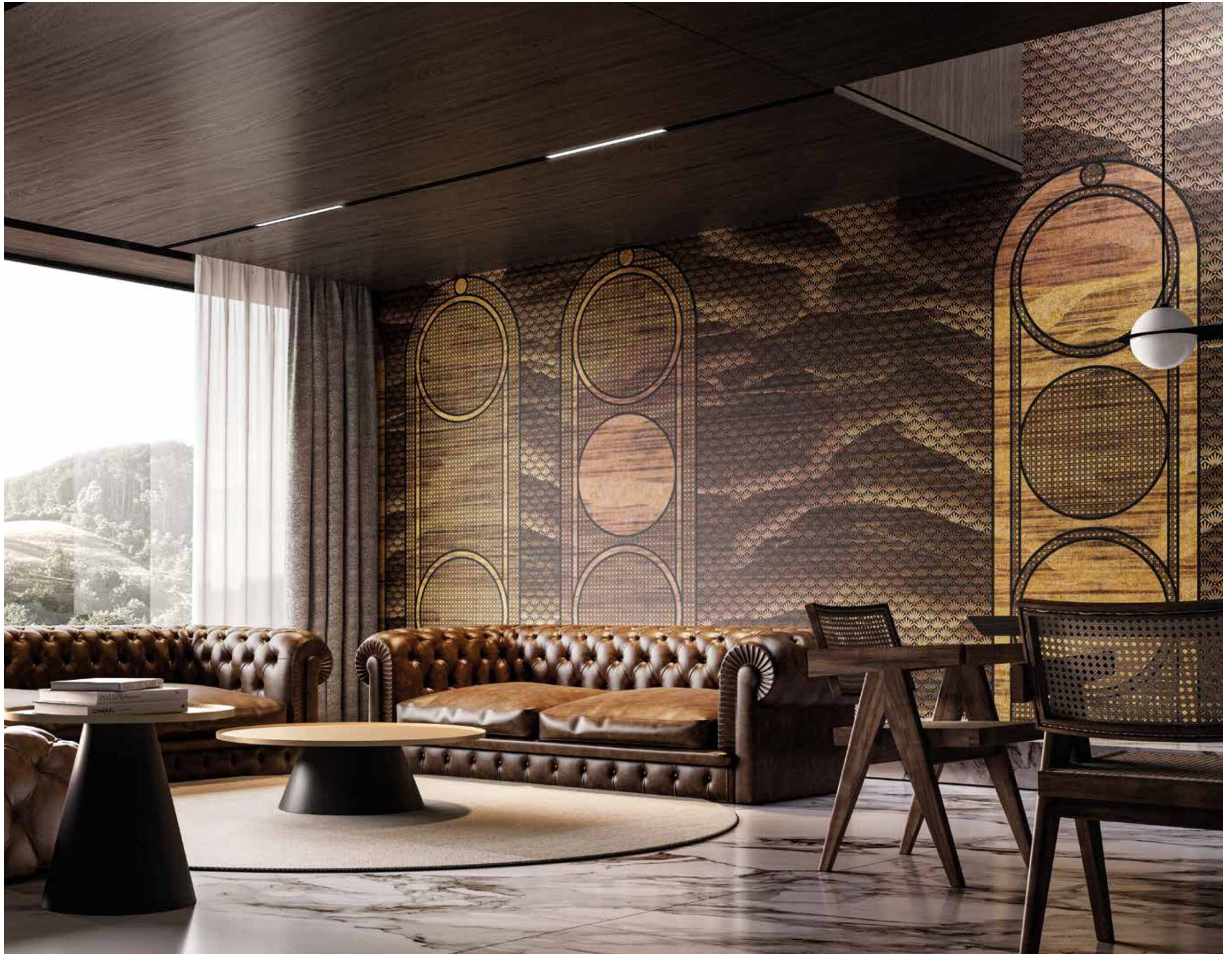






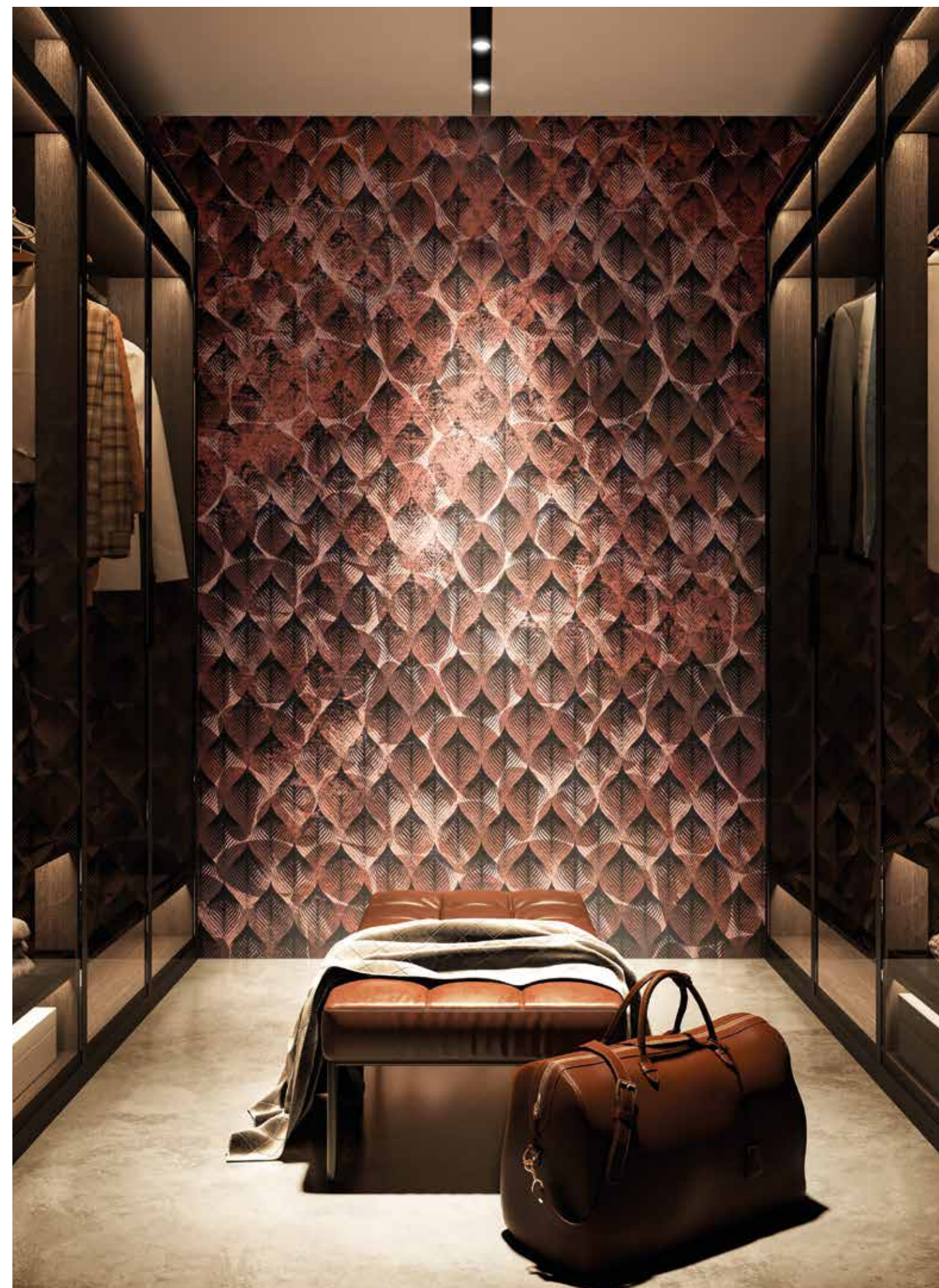
OLGA gold
24 k

variants p. 88



PENNY rose gold
24 k

variants p. 90

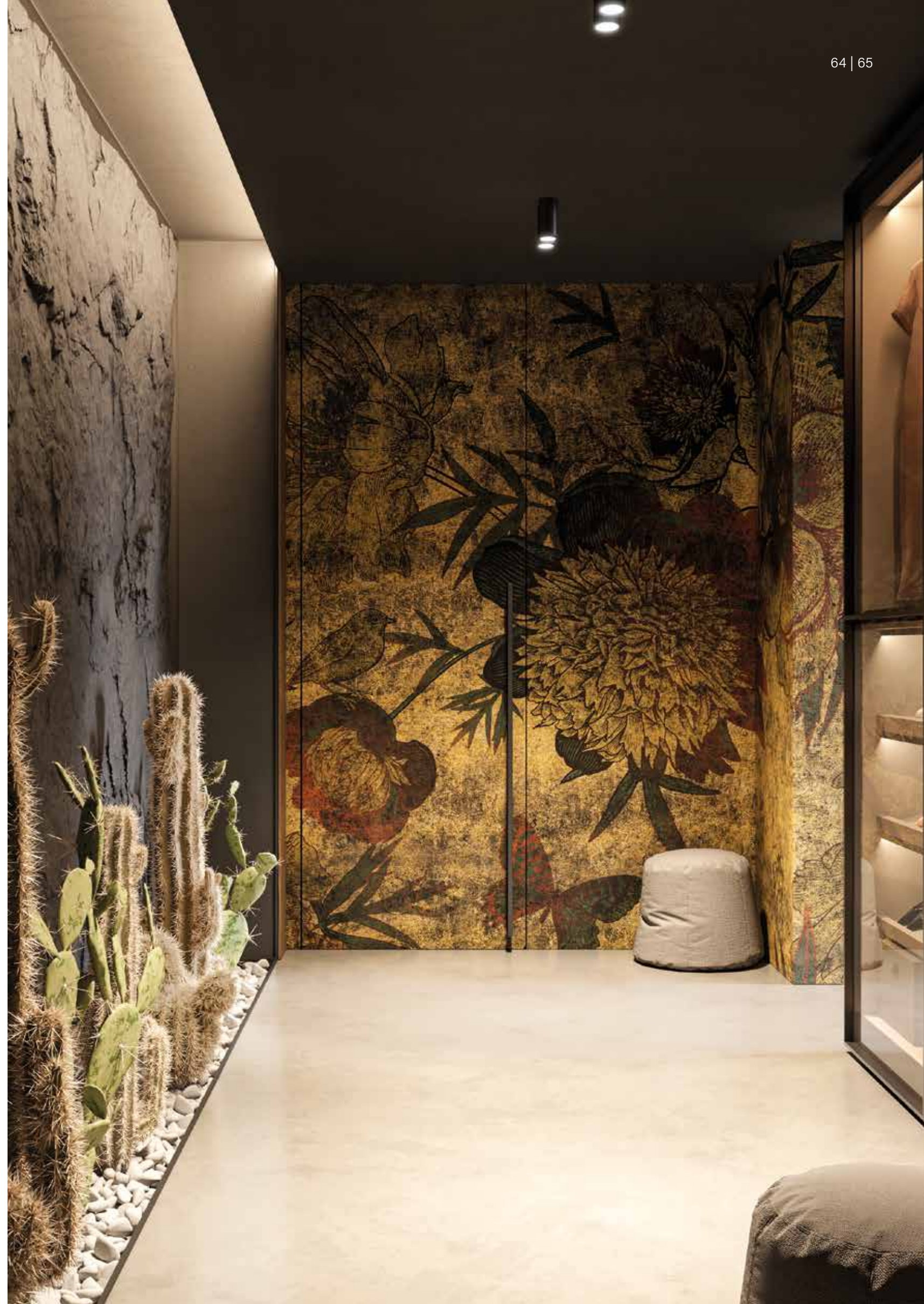






CANARIO NERO gold
24 k

variants p. 80







ANYA rose gold
24 k

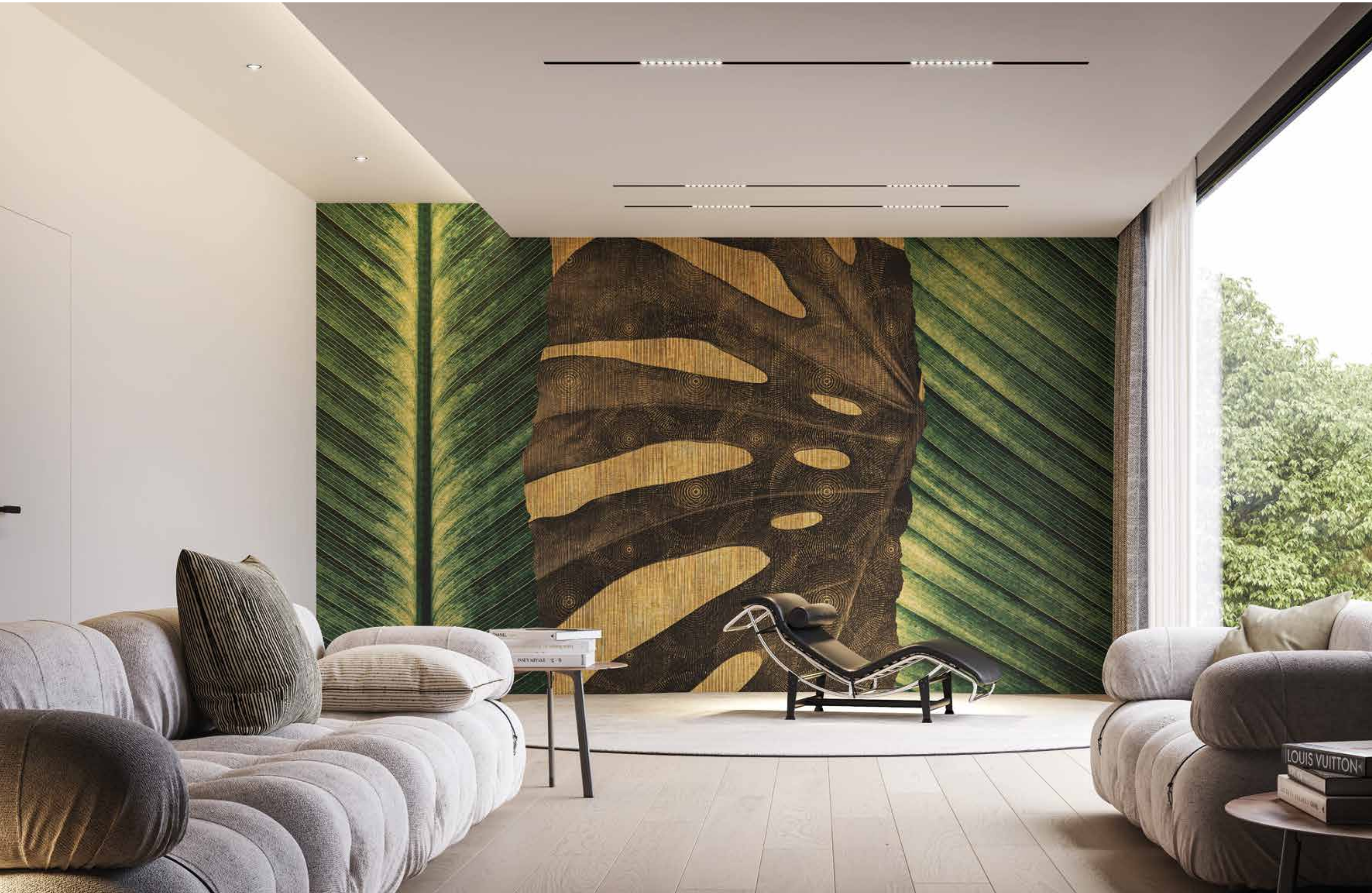
variants p. 78



OROINTENSO gold
24 k

variants p. 88





VARIANTS



gold



rose gold

ALTHEA
p. 18-19

AYAME
p. 34-35



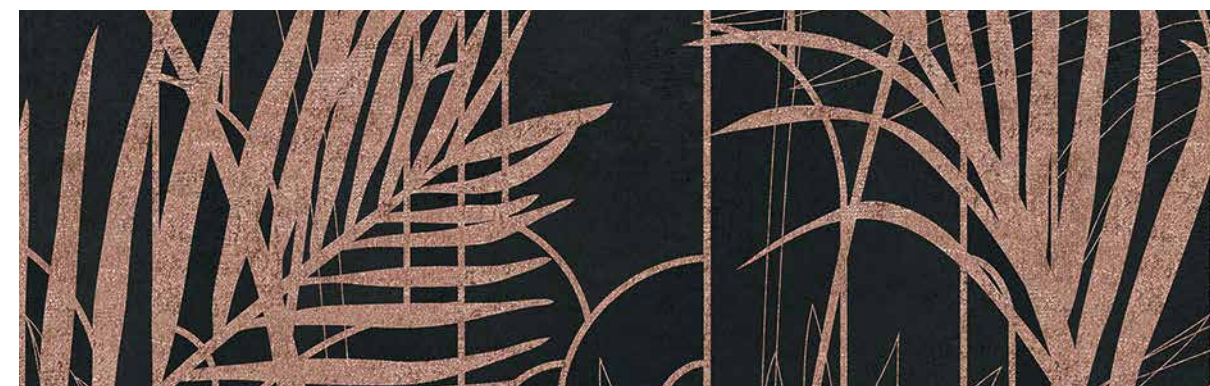
gold



rose gold



scale 1:10 ALTHEA gold



scale 1:10 AYAME rose gold



gold



rose gold

ANYA
p. 68-69

BLAIR
p. 42-43



gold



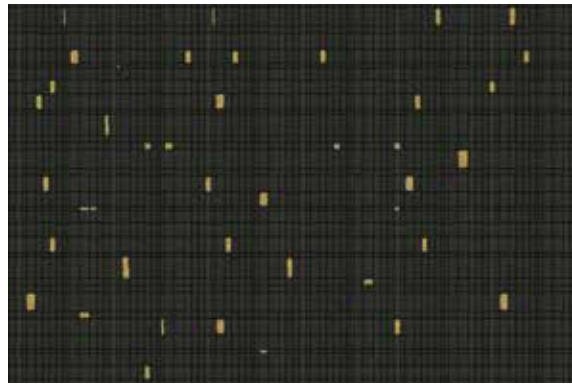
rose gold



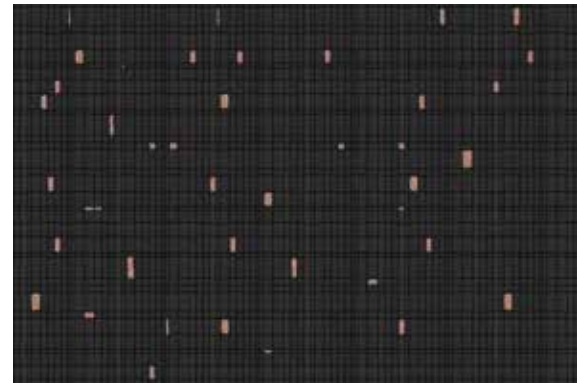
scale 1:10 ANYA gold



scale 1:10 BLAIR gold



gold



rose gold

BROOKE
p. 22-23

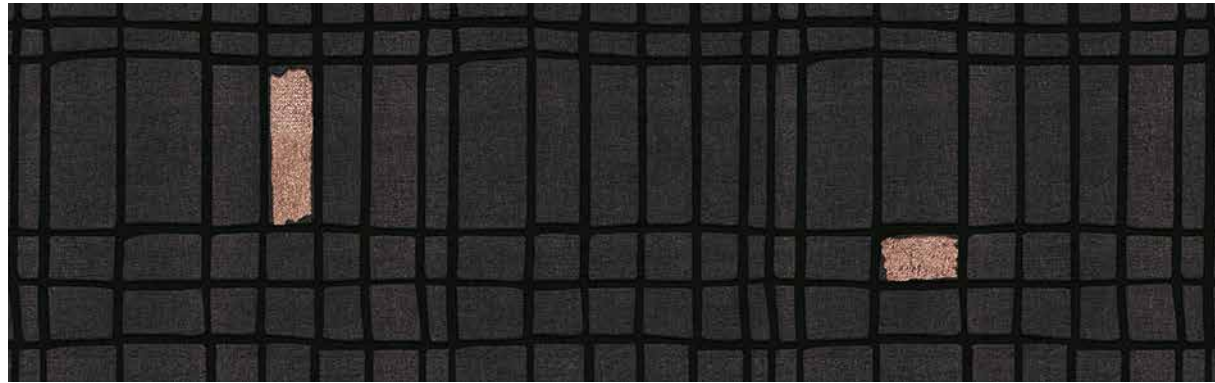
CHANEL
p. 14-15



gold



rose gold



scale 1:10 BROOKE rose gold



scale 1:10 CHANEL rose gold



gold



rose gold

CANARIO NERO
p. 64-65

CLAIRE
p. 74-75



gold



rose gold



scale 1:10 CANARIO NERO rose gold



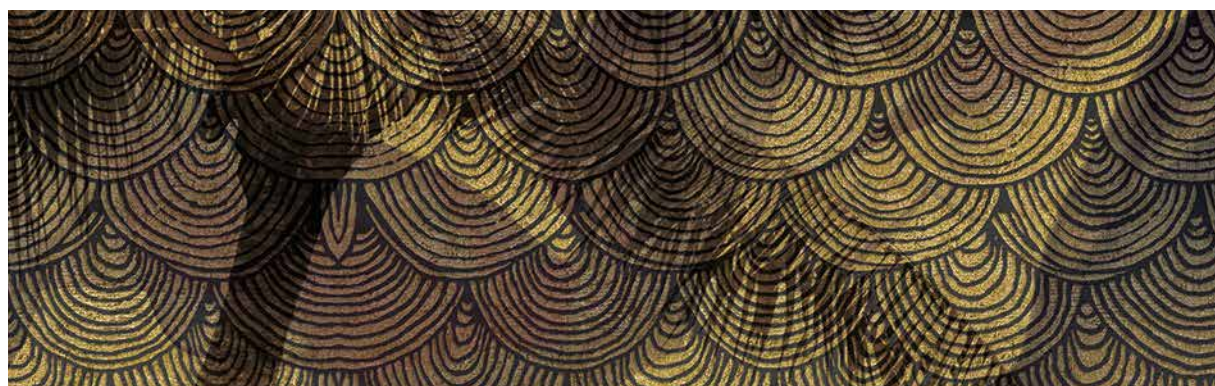
scale 1:10 CLAIRE rose gold



CORINNA
p. 48-49

gold

rose gold



scale 1:10 CORINNA gold



GOLD FISH
p. 66-67

gold

rose gold



scale 1:10 GOLD FISH rose gold



DAISY
p. 38-39

gold

rose gold



scale 1:10 DAISY gold



GOLDEN LEAF
p. 62-63

gold

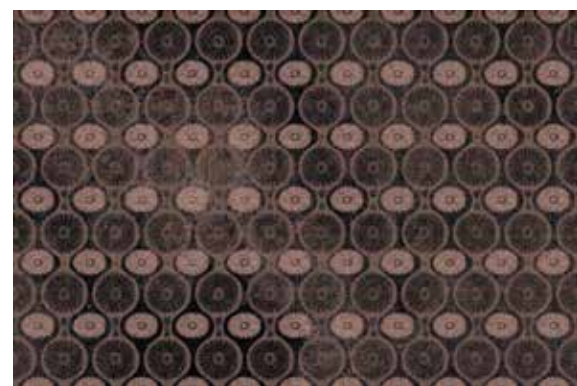
rose gold



scale 1:10 GOLDEN LEAF rose gold



gold



rose gold

HEIDI
p. 26-27

LARISA
p. 40-41



gold



rose gold



scale 1:10 HEIDI gold



scale 1:10 LARISA rose gold



gold



rose gold

JUSTINE
p. 32-33

MALLORY
p. 20-21



gold



rose gold



scale 1:10 JUSTINE rose gold



scale 1:10 MALLORY rose gold



gold



rose gold

MARIGOLD
p. 28-29

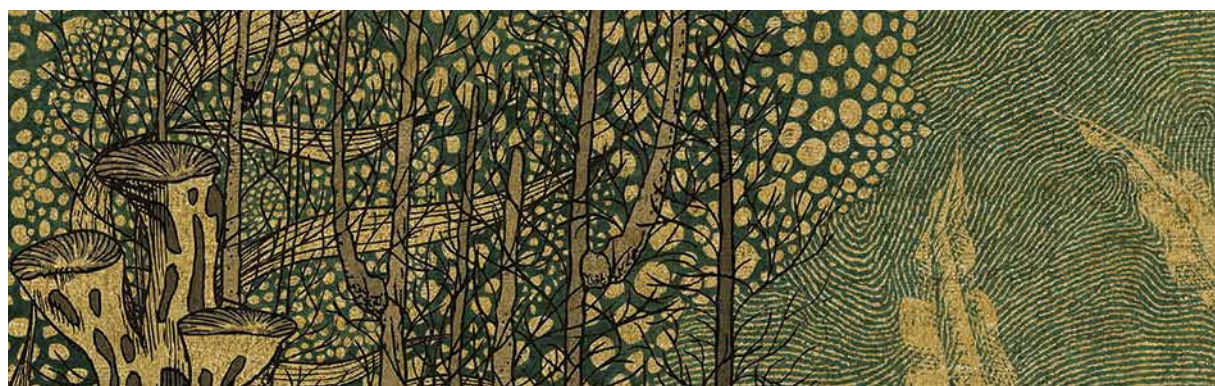
MYA
p. 50-51



gold



rose gold



scale 1:10 MARIGOLD gold



scale 1:10 MYA rose gold



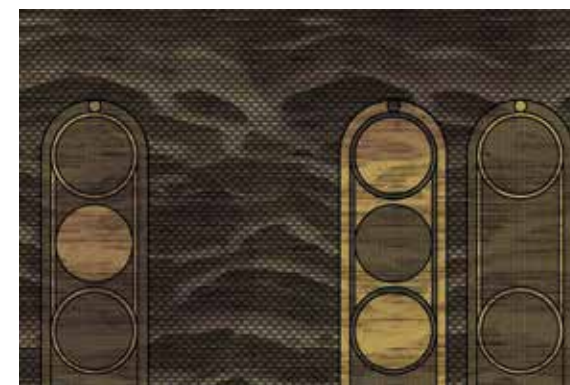
gold



rose gold

MARLENE
p. 52-53

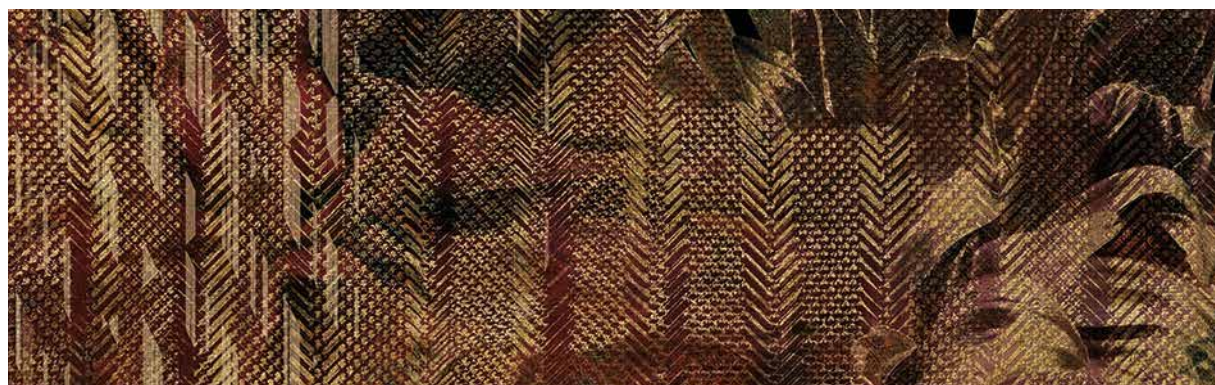
OFELIA
p. 56-57



gold



rose gold



scale 1:10 MARLENE gold



scale 1:10 OFELIA rose gold



gold



rose gold

OLGA
p. 54-55

PAIGE
p. 60-61



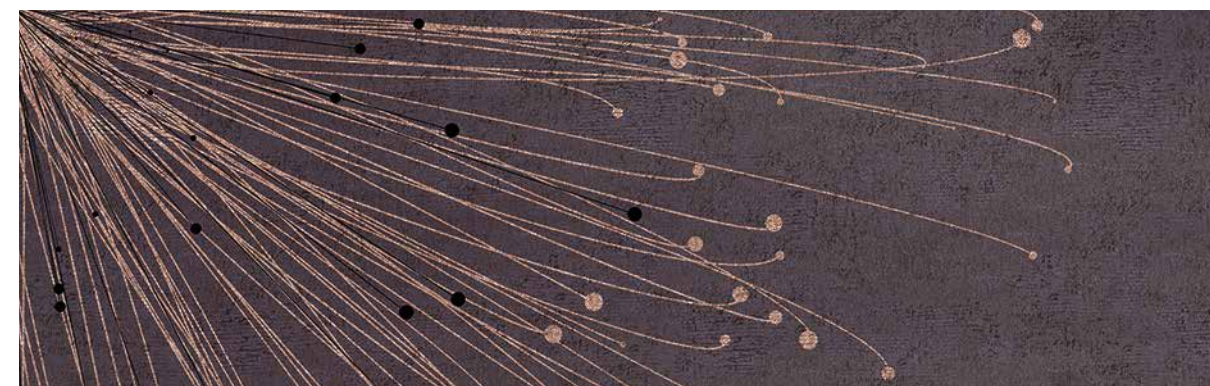
gold



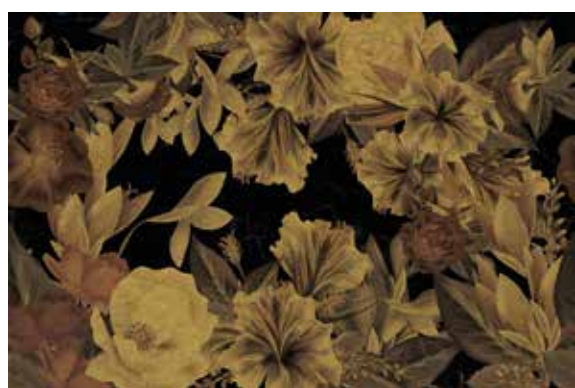
rose gold



scale 1:10 OLGA rose gold



scale 1:10 PAIGE rose gold



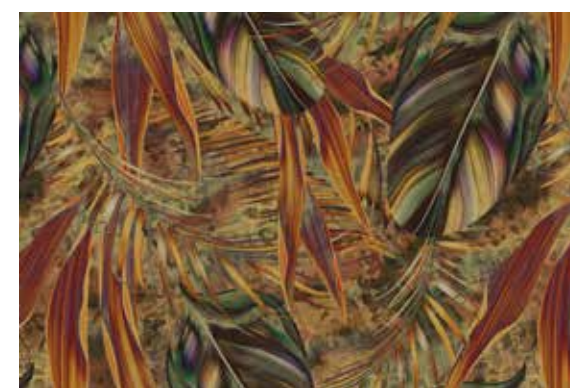
gold



rose gold

OROINTENSO
p. 72-73

PAULINE
p. 30-31



gold



rose gold



scale 1:10 OROINTENSO rose gold



scale 1:10 PAULINE gold



gold

rose gold

PENNY
p. 58-59

THEA
p. 46-47



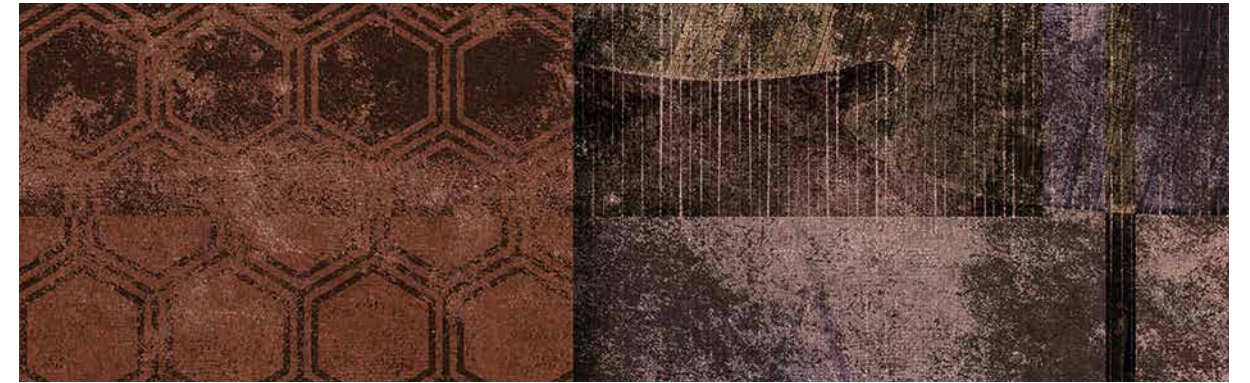
gold



rose gold



scale 1:10 PENNY gold



scale 1:10 THEA rose gold



gold



rose gold

RED MOUNTAIN
p. 70-71

VIVIENNE
p. 24-25



gold



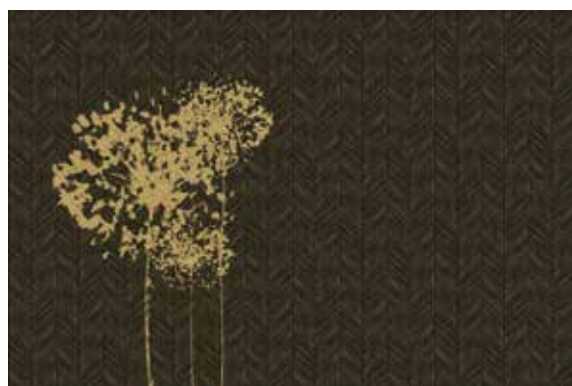
rose gold



scale 1:10 RED MOUNTAIN rose gold



scale 1:10 VIVIENNE rose gold



gold



rose gold

ZELINDA
p. 36-37



scale 1:10 ZELINDA gold

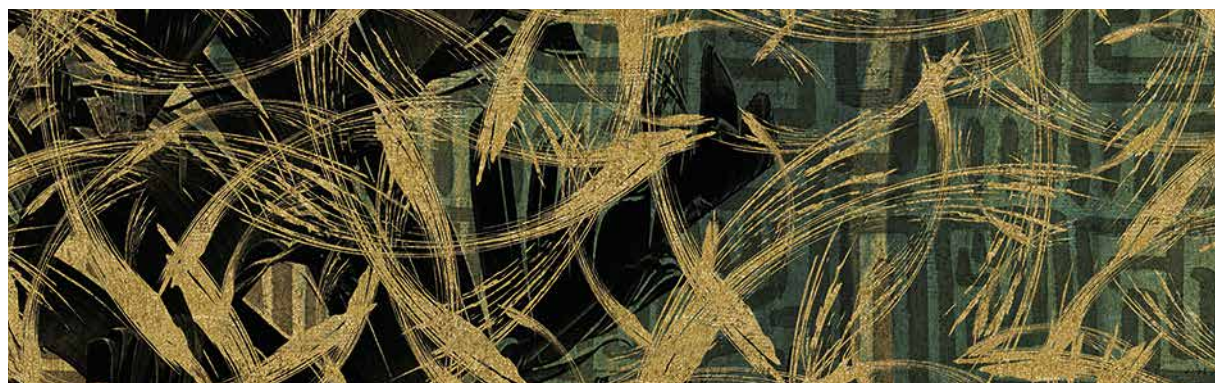


gold

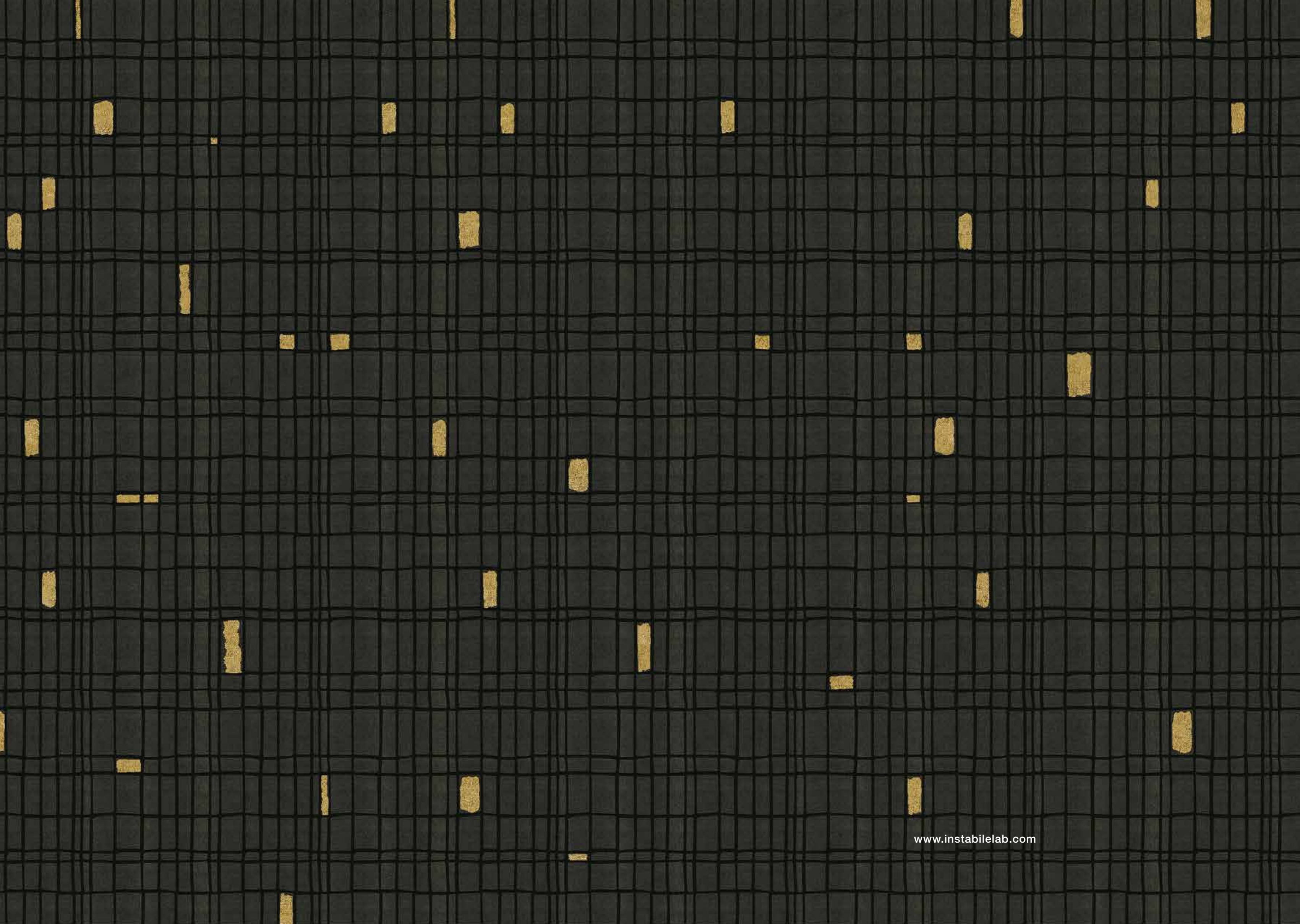


rose gold

ZOE
p. 16-17



scale 1:10 ZOE gold





INSTABILELAB®

INSTABILELAB srl

Headquarters : Via Rivale, 59 - 30036 - Santa Maria di Sala - VENEZIA - Italy

The Club: Via Einstein, 8 - 30036 - Santa Maria di Sala - VENEZIA - Italy

Tel. +39 041 5760611 - info@instabilelab.it

www.instabilelab.com